

# Section 9

Air Cleaner & Breather .... 32-35, 51-65

## Cables

Barnett ..... 68,70-72

Imported .....67-69

Choke cables.....49

CV Carbs ..... 42-45

Decals & Emblems ..... 19

Filters (Air) .....30-33

Fuel Line .....23-26

Gas Caps .....14-18

Gas Tanks BT.....2-13

Gas Taps ..... 26-29

Gas Filters.....25-26,29

Keihin Carbs .....46-49

Manifolds & Clamps .....37-39, 49-51

Pingel ..... 29

Sportster Gas Tanks .....9,12,19-22

S&S ..... 32-42

Tank Mounts ..... 2,4,6,8,11,13,22



### Air Flow Black Accessories

PCP	Item	Application
21062	Gas caps	Softail 96-99
21063	Ignition cover	XL 04-on
21064	Air cleaner insert	FLT 99-13, FXD 99-07, Softail 99-15
21065	Ignition cover	FLT 99-15, FXD & Softail 99-on
21066	Derby cover	FLT 99-15, FXD & Softail 99-on

**Note:** If manufacturer has applied any primer finish, (it is meant only for the protection of the tanks during shipment and storage) it is **not recommended as a primer finish** for paint application without proper surface preparation. Where custom paint is to be applied, the tanks must be pressure tested, then sealed with a tank prep before painting, to help protect the final finish.

# Flatside Gas Tanks



## Flatside Fat Bob Gas Tanks 84-99

Reproductions of 'flatside' Fat Bob gas tanks. They fit FXST 84 and all 85-99 models with split tanks. Mounting hardware not included but available separately. Use 83-E96 screw in gas caps and 13/16" petcocks.

- 6037** 3.5 Gal (61218-85, 61426-85)  
**6480** 5.0 Gal (61211-84A, 61228-84)

## Rubber Mounts for Flatside Gas Tanks

These rubber mounts replace the OEM bushings parts used to mount the flatside gas tanks to FX 4 speeds 85-86 and all Softails® 84-99.

- 23010** 6 grommets (11447) and 2 spacers (5775)  
**16316** Spacers (5775) (10)



## Flatside Tank Mounting Kit

Mounts late model rubber mount tanks to FL 58-84 type frames or aftermarket custom frames.

**27041** Note: Welding required



27000



27001



27002



## Tank Lifter Kits

Raises the front of the stock gas tank.

PCP	Year	Model	Lift
<b>27000</b>	97-05	FXDWG	2"
<b>27001</b>	97-05	FXDWG	3"
<b>27002</b>	00-10	FXST	2"
<b>27003</b>	00-10	FXST	3"

27003



## Custom Mounting Kit for "Flatside" Tanks

A complete mounting kit to mount "flatside" gas tanks to custom frames (replaces the OEM parts). The bevelled washers and countersunk screws are chrome-plated.

**27040** Fits the Softail® 84-99 and all models with split tanks from 85-on.



## Weld-On Rear Tank Dowels

Tapped for 5/16-24 thread.

**27004**



## Gas Tank Hardware Kit FXST 91-99

Chrome bevelled washers and countersunk screws.

**24040**



## Fuel Tank Console Door

Touring 92-07

- 45246** Smooth chrome  
**45615** Chrome with black insert and chrome skull

Touring 08-on. Replaces 61278-08.

- 29108** Smooth chrome  
**45253** Smooth black  
**45139** Black with chrome flaming skull  
**45387** Black with chrome eagle  
**45396** Black with skull  
**45394** Chrome with skull  
**45616** Chrome with milled grooves  
**45617** Black with milled silver grooves

45616



45617



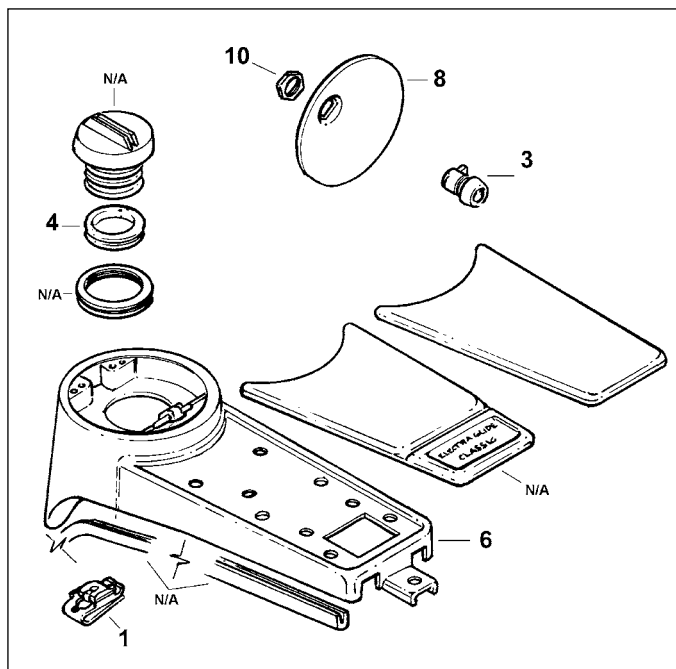
## Black FLT Fuel Door Button

Features push button design. Fits FLT 92-on. Replaces 53919-04.

**27178**



# Gas Tanks



## FLT Fuel Tank Console 88-on

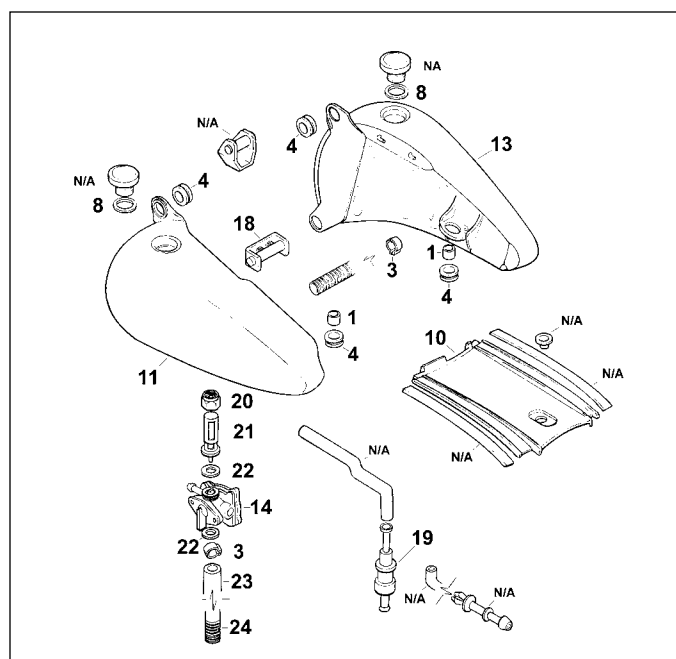
#	PCP	Description
1	12626	Clip nut (7743A) (each)
3	62022	Universal lock, (no key) (61029-92A)
4	79435	Filler cap gasket (61109-85D) (10pk)
6	64803	Console 98-07 (61270-98)
8	29108	Console door 08-on (61278-08)
10	12627	Lock nut (84850-92) (5 pk)



## Stretch Bobbed Gas Tank for FLT

For FLT models including FLHT, FLHR and FLTR models without fuel injection. Tanks include custom console to cover OEM gauge sending unit. Use standard bung right and left caps and petcock. Shorter seat may be required.

PCP	Year	Type	U.S. Gallon
89092	97-03	Carb	5
89146	96-06	Carb	7
89147	03-07	EFI	7
59155	03-07	Dash Panel	
89148	08-13	EFI	7
89051	08-13	EFI Tank and panel	6.6



## Softail Tanks and Hardware 92-on

All quantity each unless noted.

#	PCP	Description
1	16316	Spacer (5775) (10 pk)
3	16222	Fuel hose clamp (10014) (10 pk)
4	23010	Grommet, fuel tank mount (11447) (6 pk)
8	25163	Rubber Gasket (61109-85D) (pr)
10	5452	Rubber tank trim (61155-84B)
11	89101	Left 5 gal. fuel tank FLSTC/F, FXSTS/SB 95-99 (61228-97)
14	29403	Fuel valve 95-01 (61338-94C)
18	29112	Lower tank mounting bracket (61667-90A)
19	29113	Vapor valve (62150-85)
20	12593	Chrome fuel valve nut (62161-75)
21	21611	Fuel valve strainer 86-on (62166-81A)
22	21613	Valve gasket (62172-75) (10pk)
23	29109	Preformed fuel hose (62356-95)
24	28702	Nylon wiring loom, 1/2" I.D. (63505-84) (25 ft)





# Gas Tanks



## Dyna Bobbed Gas Tank 91-95

One-piece tank comes complete with chrome dash panel and all necessary mounting hardware. Gives your Dyna a Fatbob look without all the work.

**89002** 4 U.S. Gallon



## Gas Tank Filler Rings

Stainless steel rings prevent paint from blistering and flaking around filler neck. Sold each.

PCP	Type	Fitment
<b>21077</b>	Screw-in	FLST, FXD, FXST, XL 96-on
<b>21078</b>	Bung	FLST 86-on, FXST 84-on, XL 83-96

## Gas Tank T Nut

1/4" x 24 threaded T nut for FXST 96-03. Replaces 7965.

**12510**



## FXST "BIG" Flatside Tanks 84-96

These wider than stock tanks feature extra fuel capacity for longer running. Tanks are wider but, remain the same length and height to allow the use of standard dash, tank panels and seats without modifications. Flatside tanks fit all FXST 84-96 and most aftermarket frames with Fatbob brackets. Tanks accept stock or custom 82-on screw in gas caps and late model 13/16" petcocks.

**89025** 6.0 U.S. gallon



## Frame Saver Gas Tank Mount Kit

Kit includes front and rear tank mount to mount Bobbed tanks to custom or original frames. A clamping bracket is included to allow for an easy pre-check of tank placement prior to welding the bracket in place.

**27301** 85-99 Flat side tanks (for custom app's)



## FXST-FLST 00-17 Tank Mount Kit

Includes all hardware bushings and front bolt with chrome cap nuts.

**24105**

# Gas Tanks



## Bobbed Tank Kit FXD

Includes chrome cast dash assembly w. a Bob type 6 post key switch, and a plain dash base. Pre 95 units include a 2240:1 ratio large speedo. 95-on units include an adapter ring for the existing electronic speedo. 4 U.S. Gallon tank.

**PCP Application**

**90062** FXD 91-94



## Fat Bob Gas Tank for FXR Models 82-94

Fat Bob look for all FXR's 82-94 (will not fit Dyna Glide™). At 4 U.S. gallons, the tank has the appearance of split tanks but is really a one-piece welded tank with 83-on screw-top filler necks, and 75-on 13/16" external-thread gas tap fitting. Bolts to the stock mounts and accepts FL-style dash assemblies (not Cateye) with correct dash base. All parts pictured included. The tanks are raw finished and ready for painting.

**6478** Fat Bob gas tank for FXR 's



## One Piece 5.1 U.S. Gallon Gas Tanks

Are replacement type and accept screw in gas caps on both sides, available separately.

**89102** FXDWG 96-03



## FLT E-Z Bob Tank Kit 80-99

Kit includes a one piece tank with bung style caps, chrome cast dash, 5 lamp dash base, 6 post bobbed style key switch, 2:1 speedo, front wheel drive cable, and hardware. This kit requires the use of solo seat or FXR style seat for installation. Allows retention of stock gauge housing and FLT key switch, if desired. 4 U.S. Gallon tank. Some fitting required.

**89077**



## FXDWG Dash Bracket

Will accept 00-on electronic dash and speedo and FXDWG OEM electronic dash 71246-95 and 71246-99.

**73729**

# Gas Tanks



## 2" Stretch One Piece Tanks

Fits FXD-FXDWG carb models, accepting bung caps. FXDWG style accept stock dash and speedo panel.

PCP	Description	U.S. Gal.
89094	Right Cap fits FXD Smooth 91-05	4.2
89095	Dual Caps fits FXDWG 91-95	4.0
89096	Dual Caps fits FXDWG 96-05	4.0
89121	Center cap fits XL 82-03	3.5



## Colony Tank Rubber Grommets and Spacer Kit

Kit includes 6 rubber grommets (11447) and 2 spacers (5755). Mounts gas tanks on Softails 84-99.

72105



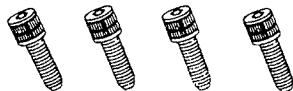
## Colony Chrome Gas Tank Mounting Kit

Chrome plated countersunk washers and flat head allen bolts to mount lower front gas tank.

72106	FLT 98-on
72072	Softail 91-99

## Fuel Tank Custom Allen Mounting Kits

PCP	Description
24059	FXST 84-89
24060	FXR 82-94
24061	FXRS 88-94
24062	FXST 90-99
24063	Dyna 91-on



## FXR Bobbed Gas Tank Kit

Features one piece 4 U.S. gallon design, which includes chrome bung style late caps, and all necessary mount hardware for installation. Kit also includes a complete 3 light dash kit which includes a plain dash base without wiring, Bob style speedometer, a 43" speedometer cable for front wheel drive application and a late Bob type 6 post chrome key switch. Units for 95-up do not include speedometer or cable, but include bracket to mount stock electronic speedometer.

PCP	Years	Ratio
89024	FXR 82-94	2:1



## Colony Chrome Gas Tank Mounting Kit

Chrome plated custom nuts, washers and stud mount gas tank.

PCP	Application	Nut
72128	Softail 84-99	Acorn
72077	Softail 00-on	Acorn
72437	Softail 00-on	Pike



## Gas Tank Mounting Kit

Chrome nut, washers and studs mount gas tank on FXD 91-on.

72076	Acorn nut
72436	Pike nut



# Gas Tank



89106



89108



89107



89115

## 5.1 Gal Bobbed Gas Tank

- One piece gas tank
- Left side fuel gauge opening, right side screw type bung

PCP	Type	Application	OEM
89106	Carb	FXDWG 96-03	61039-96
89107	EFI	FXDWG 06-08	61599-06
89108	EFI	FXDWG 10-17	61593-10
89115	EFI	FXDC 04-14, FXDF 10-17, FXDWG 04-05	61586-04B



## 4.2 Gal Bobbed Gas Tank

- One piece gas tank for carburetor models
- Left side petcock opening and screw type bungs
- Uses stock style components and FXDWG dash console
- Requires sanding and primer
- Fits FXDWG 96-03

89105

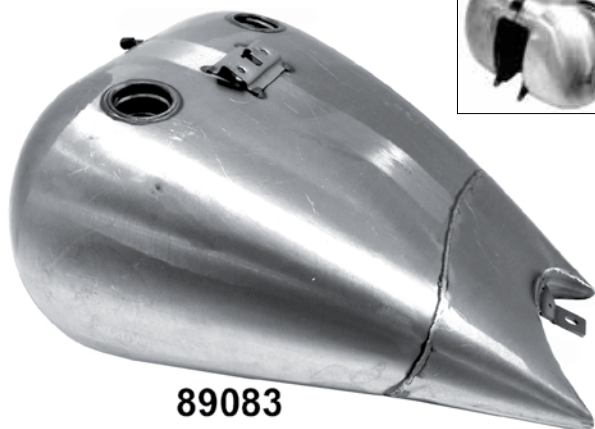


## 5.1 Gal Stock Gas Tank

- One piece gas tank with center fill panel for EFI models
- Fits FXD 2010 with center fill panel

89116

# Gas Tanks



89083



89082



89084



## FXST-FLST 04-on Piece Gas Tanks

Fits FXST-FLST models. 5.1 U.S. gallon tanks use stock mount hardware and accept right and left threaded bung cap sets.

(Stretch tanks have a 2" extension with a welded seam)

PCP	Type	Model	Year
89082*	Stock	Carb	00-06
89083*	Stretch	Carb	00-06 (use stock mounting)
89084*	Stock	EFI	00-07 (l/s fuel line fitting)
89100*	Stretch	EFI	00-07 (l/s fuel line fitting)
89109**	Stock	EFI	08-10 (l/s fuel line fitting)
89110**	Stretch	EFI	08-10 (l/s OE fuel guage hole )

\*Note: Uses right and left bung caps, does not have a provision for installing OEM fuel gauge.

\*\* Note: Has provision to fit OEM fuel gauge in left hand bung hole.



89110



## FXST-FLST 00-17 Tank Mount Kit

Includes all hardware bushings and front bolt with chrome cap nuts.

24105



## FXST Tank Mount Adaptor Kit 00-on

Allows the use of 84-99 2 piece Bob tanks with their original dash panel on FXST 00-on models.

27617



# Flush Cap Tanks



89038



89044



89037



89045

## Flush Mount Cap Custom Gas Tanks from Custom Chrome

These tanks feature locking flush mount gas caps. They are low temperatures welded at welding joints. Locking gas caps and 2 keys included.

### Big Twins (USA Gallons)

**89038** 6 Gal., FXST 84-99

**89037** 4 Gal., 1 piece with dash mounts all FXR 82-94

### Sportsters (USA Gallons)

**89044** 3.2 Gal. Bob tank with dash mounts 82-94

**89045** 3.2 Gal. Bob tank no mounts 82-94

### Replacement Parts

**16259** Set of keys (pair)



89098

### Stock Replacement Carb Type Tanks 00-06

Accepts gas cap on right side and fuel gauge on left.

**89103** 5.1 U.S. Gal.

### Smooth One-Piece Tanks

Fits FXST 84-99 models are 4.2 gallon, stretch and includes hardware for mounting. Order stock bung caps separately. Some seats may not match up. #89099 is a 2" stretch, 1 piece tank with a 2" extension weld on.

PCP	Stretch	Application	U.S. Gal.
<b>89098</b>	2"	dual cap	4.2



### Chrome Fuel Tank Fitting Cover

Chrome fuel tank fitting for FL 06-on models.

**44139** 62809-06

# Stretch Gas Tanks



89036



89057



## BT Stretch Flatside Gas Tanks 84-99

These tanks feature an additional stretch that completely fills the space between the tank and seat. Each tank is constructed from heavy gauge steel for use with stock dash, tank panel, late model (13/16" thread) petcock and most standard width seats. Available for standard 83-on screw in gas caps or for aircraft style (flush mount) screw in gas caps. Stretch portions do not hold fuel and some wide or touring seats will require modification. (Purchase caps separately)

### For Screw-in Caps

**89036** 5.2 US gallon

### For Flush Mount Aircraft Screw in Gas Caps

**89057** 5.2 US gallon

**21650** Cap set

## BT Aircraft Flatside Gas Tanks 84-99

Designed to accept aircraft style flush mount gas caps and mounting rings (sold separately). The aircraft caps are designed to mount to a special recessed area that keeps the top of the cap flush with the tank surface. Tanks are designed to work with most frames with flatside brackets and large diameter speedometers, dashes, trim panels, and 13/16" threaded petcock. Fits FXST 84-99 and most aftermarket frames with Fatbob brackets.

**89028** 5.1 US gallon



21651

21654

## Custom Flush Mount Gas Caps

Aluminum, flush mount gas caps customize BT or XL models. Bolt-in type with standard or locking cap. Installation requires modification to the tank filler neck.

**21650** Set without lock, includes vented and non-vented

**21651** As above with lock

**21652** Vented gas cap with outer ring (without lock)

**21653** Vented gas cap with outer ring (with lock)

### Gas Caps Only

**21654** Vented and Non-vented (no locks) (pair)

**21647** Vented cap only w/lock (each)

**21645** Non vented gas cap only without lock (each)

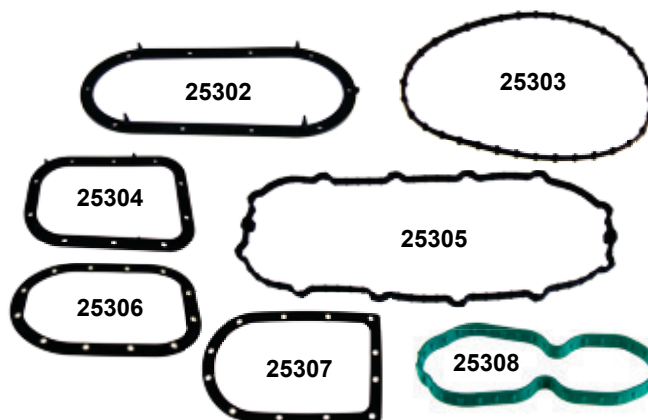
**21646** Non vented gas cap only with lock (each)



### Replacement Parts

**25284** Mounting ring gasket (10 pk)

**24554** Mounting ring chrome screws (12 pk)



25302

25303

25304

25305

25306

25307

25308

## Fuel Pump Door Seals

Sold each.

### PCP Application

**25302** Touring 02-07 (61402-02) (Viton)

**25303** Touring 08-18 (61402-08)

**25304** Softail 02-17 except Deuce models (61381-02) (Viton)

**25305** FXD 04-10, FXDX 04-05, FXDC 05-06 (75245-04A)

**25306** FXDL 04-09, FXDB 06-17, FXDWG 10-17, FLD 12-16 (75248-04)

**25307** FXWG 04-08, FXDC 07-14, FXDF 08-17 (75249-04)

**25308** XL 07-18 (75301-07)

### Fuel Pump Door Hardware Kit

**24003** 8-32 X 1/2" Torx screws for FLHT/HR/HX, FLTR 02-07 & FXST, FLST 01-17 (1311D)

**24008** 8-32 x 3/4" FXD 04-17 (1331) (12 pk)

**24012** 10-24 x 7/8" XL 07-18 (1081A) (5 pk)



24003

24008

24012

# Gas Tank



## Flush Tank Mount Kit

Can be welded to flat bottom tank for a clean look.

**73724**



73725



73726

## Weld-In Petcock Inserts

PCP	Type	Thread
73725	Male	75-on
73726	Female	3/8 NPT



## Mini Screw-In Gas Cap

Includes weld-in bung.

**73730**



## Stretched Tank

Features flat bottom for universal mounting on extended neck frames. 2.5 U.S. Gallon tank.

**89087**



89123



89124

## FXST Stretched Tanks 00-on (5.5 US Gal.)

Will accept left side fuel gauge.

**89123** Carb 00-03

**89124** EFI 00-06 and carb 04-05



89139

89141

## 2" Extended Tanks 00-05 FXST (US Gal.)

PCP	Model	Bung
89139	Carb	Single 4.5 gallon 00-05
89141	EFI	Right and left 4.2 gallon 00-06
89142	EFI	Right bung, left gauge 4.2 gal 00-05

Note: 04-on Carb models use EFI tanks



# Gas Tank



## 3.5 U.S. Gallon Replica Style Tank XL 82-03

PCP	Year	Petcock
89114	82-03	Left
73607	Cap	



## XLS 2" Stretched Tank

One piece stretched tank features curved design with full rubber mounting. For 1995-on models a coil and switch location kit must be ordered separately. PCP# 89111 is a 82-03 dash type that accepts 2, 3 or cast dash assemblies.

PCP	Type	Years	U.S. Gal
89111	Dash	82-03	3.5
89121	Single cap	82-03	3.5
89137	Single cap	04-on	4.0

## Radii Tear Drop Tank

Features curved underside with recessed mount holes.

**89126** 27" Long 3.8 U.S. gallon tank.



## Replica Captain America Gas Tank

Features 2.2 U.S. gallon capacity with two 1/4" petcock outlets, straight mount tabs front and rear, and centre fill gas cap location.

**89112**

# Gas Tank



## 3.3 US Gallon Axed Cap

Features dual cap design and universal mount tabs.

**89088** Right side petcock, Dual cap

**89089** Left side petcock, Dual cap

**89090** Left side petcock, Single cap

**932** Gas cap, vented (each)



## Wyatt Gatling Image Tanks

4" Stretch tank. Pop up tanks include cap. (US gal)

**PCP Gal Type**

**89118** 4.0 Pop-up (23" OAL, tunnel 19" x 1 7/8" ID)



## King 3.2 US Gallon Gas Tank XL 07-on

EFI tank features rolled bottom edge and pop-up gas cap

**89149** XL 883N, 883R & 1200N 07-on



## Bobbed 4 Gal Tank with Aircraft Cap XL 04-06

Raw one piece tank with left side petcock opening and bolt-in locking aircraft style gas cap.

**89041**



## 2.4 US Gal Gas Tank XL 1200X 11-on

Stock replacement gas tank for XL1200X. Replaces 61724-10.

**89130**

# Sportster® Tanks

We offer no warranty, nor do we recommend any clear coating to be applied over our decals or tank transfers.



#	PCP	OEM	Description
4	22107	14172-87	Root beer, gold, black



**22141**

## Topline 883 Decals

PCP	Description (Each)
22141	Silver, blue (14232-90)
22143	Light blue, dark blue, silver (14232-91)



## 3.3 US Gallon King Tank

- Left side petcock opening and tunnel bracket below tank
- Smooth radius profile and accepts pop-up caps
- Fits XL 04-06 carbureted models

**89040**



## 4.5 US Gallon Replica Roadster Tank EFI XL

- Steel tank with stock filler neck & left side fuel line fitting
- Fits EFI models XLC 883 07-11, XL, XLC 1200 07-10

**89119**



## Legacy Tank Rubber Knee Pads

- Black rubber knee pads for Legacy gas tanks
- Set of 2

**23107**

## 3.8 US Gallon Legacy Tank

- Stock style screw-in bung, order gas cap separately
- Mounting bracket kit must be fabricated

**89056**



# Sportster® Tanks

89071



89127



## 3.2 US gallon XL One Piece Bobs

Tanks fit XL models. Bolts to existing holes. Accepts 2 or 3 light dash kits which must be ordered separately. Must use XLS or shorter seat on 82-on models. Order caps and dash separately.

### PCP Description

89071	82-94
89127	04-06
27259	Iso Mount kit 82-03



## XL Bobbed Gas Tank Kits-Solid Mounted

Kit includes all parts necessary for a solid mount version. The dash panel accepts FL speedometer but does not accept the stock FL key switch, (plain dash only). Order speedo separately. All kits can be used with a solo seat (or custom seat with a shorter nose like the XLS type). Dash does not accept a speedo with a built in tach. 3.2 Gallon tank.

89017 82-94

89059 95-03

**Note:** The zinc-chrome primer is for the protection of the tanks during shipment and not recommended as a base coat for paint application. As with any fuel tank, particularly one where custom paint is to be applied, the tanks must be pressure tested, and temporarily mounted to frame to check clearances, then sealed with tank prep (PC #78002) before painting.

## XL 3.2 US Gallon Quick Bob Tanks

Feature a smooth top that **does not** accept dash panel or speedo. Includes one piece tank and mounting hardware.

### PCP Description

89004	82-94 use 83-on screw style caps
89005	95-03 use 83-on screw style caps (left side tap)



## 3.2 US Gallon XL King Tank

Classic shaped custom tank design features rolled under bottom edge that provides a flowing line to the look of your bike. Tanks are replicas of the 96-on OEM style tank that are stock on 97-03 XL. Measure 20" long by 10" wide.

### PCP Years Tap Side

89031	82-94	Right
89032	95-03	Left
89138	04-06	Left (61348-04)

**Note:** When installing on 1992 to 1994 models and disconnecting or eliminating the OEM continuous venting system, you must replace the stock vented cap with an earlier version screw cap.

# Sportster® Tanks

6273



## “King” Gas Tanks for Sportster

King tanks are made 2” wider than stock, to give you that needed extra mileage. 3.1 U.S. gal. capacity (stock 2.2 U.S.) Measure 2” wider than stock and is 17-1/2” long by 10-3/4” wide. Accepts 3/8” NPT petcock PCP# 938 and a screw cap. 82-92 tanks are fitted with correct internal venting system.

PCP	Years	Tap Side
6273	82-92	Right

6034



## “Standard” Gas Tank for Sportster

OEM-styled Sportster High-Tunnel Tank features stock mounts. 2.4 U.S. gal. capacity. Uses 75-on style gas tap.

PCP	Fits
6034	82-92 (61023-83)
89035*	93-03 (61264-93)

\*Uses late type screw-in cap



## 2.4 US Gallon 1200X Tank

Stock replacement rolled bottom gas tank for XL 1200X EFI 11-on models only.

89130



## XL 2” Stretched 4 US Gallon EFI Gas Tank

Hornet 2” stretched tank has screw bung. Order cap separately. Fits XL 07-on models. Raw tank requires sanding and priming.

89048

89128



89122



## 2.3 US Gallon Bobber Gas Tank

Accepts left side petcock. Order cap separately.

PCP	Application
89128	07-on
89122	04-06



## Replica 2.4 US Gallon Gas Tank

Raw tank for EFI XL 883R, 883N and 1200N 04-on models.

89117

**IMPORTANT:** To eliminate any potential problems with your gas tank we recommend that you pressure test, seal and mount your tank before painting.

# Sportster® Tanks



## 3.2 US Gallon E-Z Bob Tank Kit XL 82-on

Tanks feature one piece design, chrome bung style late caps, chrome cast dash kit and installation hardware.

**89073** 82-94

**89074** 95-03 No speedo

**89145** 04-06



## Chrome Sport Bob Tank Mount Kit

Kit allows you to mount Sport Bob tanks on Sportster models. Kit includes switch cover, horn relocation bracket, choke bracket, coil bracket and hardware.

**73514** For use with PCP tank #89071 and #89004

## 3.2 US Gal. XL Quick Bob Tanks 04-06

**PCP** Application

**89129** Smooth



## Gas Tank Mount Kit

Fits 1995 model tank, PCP #89071.

**27153**

## Colony Chrome Gas Tank Mounting Kit

Chrome plated custom acorn nuts, washers, studs, spacers and grommets to mount gas tank on Sportster 96-on models.

**72107** 96-03

**72265** 04-on



## 3.2 US Gallon XL King Gas Tank

Replica gas tank has a classic shape with the bottom edge rolled under to give a flowing line. Tank is for EFI type models. The fuel pump mount screw threads are 10-24 UNC. Order gas cap separately. Check the tank for flaws and fit before painting. It requires sanding and primer before painting. Do not grind or sand the seams or joints. Clean the inside of the tank. Pressure test the tank and use a tank sealer. Fits XL 883R, 1200N and 883N 07-on. Replaces 61405-07.

**89200**

## Iso-Mount Kit

For XL Bob tank kits.

**27259** 82-03



# Gas Caps



## Chromed Steel Late Threaded Gas Caps

- OEM replacement “bung” steel caps for 83-95 tanks
- low-pressure relief vent recessed in the cap
- Sets include a left non-vented and a right vented cap
- 83-95 vented cap also fits single cap models except FLT(C)/FLHT(C)

PCP	UM	Fitment	OEM
<b>3083</b>	Set	83-95	
<b>3084</b>	Non-vented (each)		61103-83
<b>3085</b>	Vented (each)		61102-83A
<b>45481</b>	Set	84-95 FXST	61103-83B, 61272-92A
<b>45480</b>	Vented (each)		61272-92A



Chrome



Gold

## ‘Eagle Spirit’ Chrome Screw-In Gas Caps

- Steel caps with low-pressure relief vent
- Chrome caps come in choice of chrome or gold eagle
- Sets include a vented and a non-vented cap

Chrome	Gold	UM	Fitment
<b>45135</b>	<b>45235</b>	Set	83-95
-	<b>45236</b>	Vented (each)	
<b>45137</b>	-	Non-vented (each)	
-	<b>45377</b>	Set	FXST 96-99



21133

21062

## Air Flow Style Gas Caps for Softail 96-99

PCP	Finish
<b>21062</b>	Black
<b>21133</b>	Chrome



## Chrome Plastic Threaded Gas Cap 83-95

- OEM style plastic bodied screw-in caps with nylon threads
- 83-95 vented cap also fits most single cap models except FLT(C)/FLHT(C)

PCP	UM	Fitment	OEM
<b>3088</b>	Non-vented (each)	83-95	61103-83



## Chrome Locking Gas Caps

- Fit 83-95 models with Bung type filler cap
- Includes 2 keys.

**45442** Vented cap (each)



449



450

## Custom Gas Cap Covers

Fits 73-on. Sold each.

**450** Satellite

**449** Krommett (recommended for shows only)

**45265** Krommett 2.880”I.D. (recommended for shows only)

## Gas Cap Identification

1983-95 approximately 1.720” O.D. of thread  
1996-on approximately 1.780” O.D. of thread

# Gas Caps



## Chrome Softtail Cap Set

Features a uniquely designed insert which is permanently installed in the existing bung on bobbed tank sets for BT 84-95 models. The chrome caps thread into this insert and act as the actual gas cap.

PCP	Application
45352	84-95



## Low Profile Cap Set FXST-FLST

- Polished mirror stainless finish
- Use with Bob tanks 1984-99

PCP	Item	Application
45448	Cap set	84-95
45476	Cap set	96-99
45477	Vented cap	FLT 79-95, FXST 84-on, XL 83-91
45478	Vented cap	FXST 96-on, FXD 96-17, XL 96-on



## Chrome Low Profile Cap Set 00-17

- Features screw-in right side with left side dummy to replace fuel gauge.

59515	FXST-FLST-FXDWG
-------	-----------------



## Low Profile S/S Cap Set

- Polished stainless steel cap with a peaked center

PCP	Application
59800	Softail 84-95, FLT 83-95, FXR 83-94
59815	96-05



**NEW ITEM  
COMING SOON**

## Chrome Skull Gas Cap Set with Black Eyes

Fits FXST 18-on.

45612



## Lone Star Low Profile Chrome Cap Set FXST

- Pointed style cap features a star motif

PCP	Application
59802	96-99 set
59803	83-95 vented cap only
59804	96-05 vented cap only

## Gas Cap Identification

1983-95 approximately 1.720 O.D. of thread  
1996-on approximately 1.780 O.D. of thread

# Gas Caps



## Chrome Pop-up Cap Set

Fits right and left side on 1983-95 tank sets by pushing in centre cap, the knurled portion appears and allows turning of the cap.

**45479** Set 84-95

**45449** Vented cap only FLT 79-95, FXST 84-95, XL 83-91



**59912**

## Smooth Pop Style Cap by Wyatt Gatling

PCP# 59915 is set with left side dummy.

PCP	Type	Application
<b>59912</b>	Set	Softail 84-95, FLT 83-95, FXR 83-94
<b>59913</b>	Vented cap	XL 04-on, Softail 84-95
<b>59914</b>	Vented cap	FXST, FLST 96-10, FXD 96-17 and XL 96-03 & 07-10
<b>59915</b>	Set	FXST, FLST, FXDWG 00-17

**59308**



**59309**



## Chrome Pop-Up Cap Softail 96-99

Features built-in dress ring with o-ring for seal at cap area.

**PCP** **Application**

**59308** Left, non-vented

**59309** Right, vented FXST-FLST-XL 96-on, FXD 96-17

## Gas Cap Gaskets

Replacement rubber gaskets for aftermarket and OEM tanks. Sold in 10 packs for all 3.5 and 5 gallon tanks.

**PCP** **Description**

**25163** 82-on (61109-85C) (pair)

**79435** 82-on, James (61109-85C) (10 pk)



## Black Vented Pop-Up Gas Cap

Pop-up vented gas cap with smooth finish to fit FXD, FLST, FXST 96-99, XL 96-03 and XL 07-10.

**45063**



## Smooth Vented Pop-Up Caps and Ring

PVC pop-up caps and dress-up rings feature a smooth finish. For XL 98-on models

**Black**

**45460** Vented for 2.1 or 4.5 US gallon tanks

**45453** Vented for 3.3 US gallon tanks



## Chrome Pop-up Gas Cap with Black Skull

Chrome pop-up gas cap has a black raised modern skull design. FL, FX 84, FXST 84-95 and FLST 86-95.

**PCP** **Type**

**45262** Vented

**45266** Non-vented

## Gas Cap Identification

1983-95 approximately 1.720 O.D. of thread

1996-05 approximately 1.780 O.D. of thread



# Gas Caps



## Screw-In Pirate Skull Gas Caps

- Black caps with chrome rim and chrome skull design
- Sets include a vented and a non-vented cap
- Vented caps are sold each

Set	Vented	Fitment	Thread
<b>45499</b>	<b>45290</b>	FL, FX 84, FX, FXR 84-94, FLST 86-95, FXS, FXST 84-95, XL 83-91	1.720"
<b>45291</b>	<b>45292</b>	97-on	1.780"



## Chrome Skull Gas Caps

PCP	Type	Application
<b>45497</b>	Vented (each)	FXD, XL 96-on (75097-05)
<b>21808</b>	Set (L&R)	FXST, FLST 96-99

**45163**



**45238**



**45201**



## Flamed Gas Cap Set

Diecast screw-in set of one vented and one non-vented cap. Fits FL 84, FX 84-85, FXST-FLST 84-95.

PCP	Style
<b>45163</b>	Chrome cap with chrome flames
<b>45238</b>	Chrome cap with black flames
<b>45201</b>	Black cap with chrome flames



Chrome cap with black skull

Black cap with chrome skull

## Screw-in Skull Gas Caps

- Sets include a vented and a non-vented cap
- Vented caps are sold each
- Chrome caps feature black mesh skull design
- Black caps have a chrome mesh skull

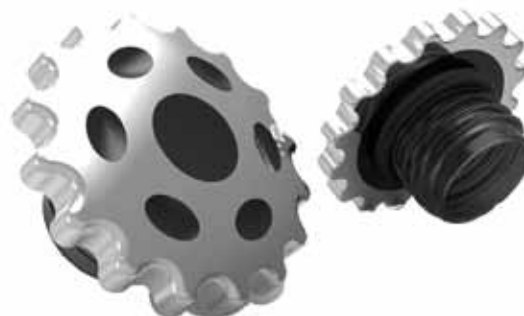
Fitment	UM	Chrome	Black
FL 84, FXST 84-95, FLST 86-95	Set	<b>45213</b>	<b>45217</b>
	Each	<b>45050</b>	<b>45064</b>
FXD, FLST, FXST 96-12	Set	<b>45219</b>	<b>45222</b>
	Each	<b>45204</b>	<b>45205</b>



## Contrast Prismatic Gas Cap Set

Black prismatic style gas cap set for the right and left side has natural aluminum hi-lites. Fits FXST, FLST 96-99.

**45088**



## Chrome Sprocket Gas Cap Set

Fits FXST & FLST 96-99

**45613**

## Gas Cap Identification

1983-95 approximately 1.720 O.D. of thread  
1996-05 approximately 1.780 O.D. of thread

# Gas Caps



## Chrome Billet Cross Gas Cap

Features cross design. #45492 Set includes right side vented cap and left side dummy cap to replace the fuel gauge.

### PCP Application

- 45490** Softail 00-07 & XL-FXD 96-on (not FXD/X 04-on, FXDC 05-06 and FXDSE 07-on)(ea)  
**45491** FXST 84-95, FLT 83-95, FXR 83-94 (set)  
**45492** FXST-FLST-FXDWG 00-07 (set)



## Chrome Billet Cap Set

Are constructed from solid bar and machined for FXST 84-95, FXR 83-94, FLT 83-95

- 45485** Low style  
**45486** Medium style  
**45487** Tall style



## Iron Cross Chrome Billet Gas Caps FXST

### PCP Application

- 59807** Softail 84-95, FLT 83-95, FXR 83-94 (set)  
**59808** FXST 84-on, XL 83-91 vented cap only (each)  
**59880** FXST 00-17 and FXDWG 00-17 (set)



## Billet Flame Cap Set

Fits 84-on with vented right cap and non-vented left threads. 96-on with left side dummy cap to replace fuel gauge.

- 59806** FXST 84-95, FXR 83-94, FLT 83-95 (set)  
**59882** FXST-FLST-FXDWG 00-17 (set)  
**59883** Softail 84-on, FLT 79-85, XL 83-91 Vented (each)

## Bung Style Gas Cap 83-95

Vented cap for single cap tanks. Each.

Softail 84-95, FLT 79-85, XL 83-91  
 FXR 83-94, FXS 83-95

### PCP Style

- 45449** Pop-up  
**59883** Flame  
**59808** Maltese  
**21644** Profile  
**45236** Eagle Spirit with gold inlay



## Gas Tank Fuel Gauge

### PCP Application

- 29428** FXD, FXST, FLST, FLHR 01-on (75049-01A)



# Gas Tank Related



## EFI Replacement Fuel Pump Kits

Stock style replacement pump with pump hose and hardware.

### PCP Application

17390	FLT 98-99 (61342-95)
17389	FLT 00-01 (61744-00)
17428	FLT 08-15 (62908-08)
17429	FXST-FLST 08-17, FXD 04-17 (75284-08A)
17393	XL 07-17 (75305-07A)



## Fuel Pump Components

Sold each.

### Fuel Pressure Regulator

#### PCP Application

21101	FLHT, FLHR, FLTR 08-18, FXD/WG, FLD 04-17, Softail 08-17, XL883/1200 07-18 (61015-04A)
21102	FLT, FLHT, FLHR, FLTR 02-07, Softail 01-07, V-Rod 02-17 (27408-01)

### Regulator Housing

21103	Touring 02-07, Softail 01-07 (62373-01)
-------	---



## Fuel Tank Sender Units-USA

### PCP Application

29128	FLT 84-87 (75037-84)
29451	FLT 00-01 (75139-00)
29453	FLHT/I, FLTR/I 02-05 (75071-02)
29452	FLHR/I/CI 02-05 (75205-02)
29135	FXD 97-on (75078-97)
29456	FXSTI, FXSTSI, FLSTI, FLSTSI 05 only (75300-05)
29450	FXR 82-87 (75034-82)



## Fuel Injection Replacement Parts 1995-on EFI

### PCP Application (see web for more fitments)

29175	Fuel injector (27218-95)
29125	Fuel pressure regulator 95-01 300 K PA (27219-95)
29176	Fuel pressure regulator 350 K PA 95-01
29177	Fuel injector 95-05 (27609-01)
29179	Barometric sensor up to 100 KPA (32424-95)
29126	Air temperature sensor FLT 95-02 (27270-95)
29183	Engine temperature sensor (32446-99)
29184	Throttle position sensor (27629-01)
29185	Throttle position sensor 06-on (27659-06)
29186	Relay with diode 01-07 (31511-01B)
29188	Coolant temperature sensor 03-08 (32315-01)
79444	Gasket and seal kit
29193	Oxygen sensor 95-99 EFI (27683-06)
29194	Oxygen sensor plug (66054-06)



## Internal Fuel Line

Replacement fuel line fits from the pump to the filter on models with fuel injection. Fits FLHT, FLHR 00-07 & FXST, FLST 01-07.

21090



# Tank Hardware



## EFI Fuel Lines

Fuel line with connectors to replace line from tank to fuel rail. For Delphi EFI.

### PCP Application

- 21120** FLHT, FLHR, FLHX, FLTR & FL Trike 08-11 (62905-08)  
**21121** FLHT, FLHR, FLHX, FLTR 02-06, FXD/WG 04-17 (62349-04F)  
**21122** FLHT, FLHR, FLHX, FLTR 07, Softail 01-17 (62900-01D)  
**21123** XL 07-18 (except 1200V or 1200X (27693-07))  
**21124** O-ring service kit for EFI lines



## Fuel Check Valve Assemblies

Includes check valve, fittings and line. For Delphi EFI, except where noted.

### PCP Application

- 21104** FLHT, FLHR, FLHX, FLTR & FL Trike 08-18 (62228-08A)  
**21143** FLHT, FLHR, FLTR 00-02 with Magnetii-Marelli EFI (61408-00A)



## Chrome XL Enricher Knob Bracket 2004

This polished and chrome plated bracket includes chrome hardware to mount on XL 883, 883C and 1200R 04 models.

- 61209** T/L 16358-04  
**27384** Preston as above



## Replacement Fuel Filter

OEM style replacement fuel filter.

### PCP Application

- 77250** Softail 01-07, FLT, FLHT, FLHR, FLHX, FLTR with Delphi EFI 02-07 (61001-01)  
**77207** FLHT, FLHR, FLTR & FL Trike with Delphi EFI 08-18, Softail 08-17, FXD/WG, FLD 04-17 (61011-04A)  
**77205** XL 883 & 1200 07-18 with Delphi EFI (75304-07A)

## Replacement Fuel Filter

Replaces fuel line from gas tank to the fuel rail. Fits FLT, FLHT, FLHR 95-99.

### 77084



## FLT EFI Replacement Fuel Line Kit

Replaces fuel line from gas tank to the fuel rail. Fits FLHT, FLHR, FLHX, FLTR 12-16.

### 29457

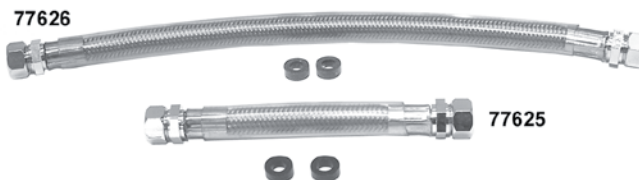


## Russell Fuel Crossover Lines

These stainless braided hoses have chrome ends that utilize chrome compression fittings in place of the normal hose clamps. Maximum fuel flow is achieved with an ID of 5/16".

### PCP Application

- 77623** Dyna 93-05  
**77624** Softail 86-99  
**77628** Softail 00-05 (not for Duece)



## Braided Steel Crossover Lines

Lines include chrome ends, seals and a protective clear plastic tube.

### PCP Application

- 77625** FXD 93-05  
**77626** FXST 86-99

# Fuel Line



## Reinforced Black Fuel and Oil Line (25 Feet)

Neoprene fuel and oil line for all Harley models. Available in shop supply 25-foot rolls, this top quality line is reinforced with high strength rayon. Neoprene outer cover resists oil and grease for years.

<b>77437</b>	3/16"
<b>3055</b>	1/4"
<b>3056</b>	5/16"
<b>3057</b>	3/8"

## 5/16 Stainless Steel Gas Line

**77433** Sold in 5 foot lengths



## Chrome Metal Hose Cover

Flexible spring loaded covering in 3 foot lengths. To install, cut to same length as hose, hose cover will compress under tension to allow installation of hose clamps for a snug fit. Protects from heat and abrasion.

<b>77427</b>	1/4" Fuel line cover
<b>77429</b>	3/8" Oil line cover



## Econo-Seal Hose Ends

The ultimate hose clamp. Perfect for all gas and oil lines. Provides additional support. May be used over again. When used with our custom steel braided line they present a custom look. Chrome. 5/16" ends fit 1/4" hose. 3/8" ends fit 5/16" and 3/8" hose.

<b>875</b>	1/4"-5/16" chrome (6 pack)
<b>868</b>	5/16"-3/8" chrome (6 pack)



## Braided Gas Line Kit

Includes 2 feet of 5/16" braided covered line and 4 econo-seal chrome end clamps.

**77425** Kit

## Reinforced Fuel Line

Heavy duty reinforced gas and oil line. 1/8" wall. Sold in 25-foot rolls.

PCP	I.D.
<b>3048</b>	1/4"
<b>3052</b>	5/16"
<b>3054</b>	3/8"



## S.S. Mini Hose Clamp

Screw type steel clamp.

PCP	O.D.
<b>3846</b>	3/8"-5/8" (10 pack)
<b>3850</b>	1/2"-3/4" (10 pack)



## Flex Chrome Hose Covering

Features heavy gauge mylar construction with chrome finish.

PCP	25' Length
<b>77459</b>	1/4"
<b>77460</b>	3/8"
<b>77461</b>	1/2"



## High Flow Fuel Inlet

Replaces broken fuel inlet to the carburetor bowl for modified motors. Fits all Keihin carburetors (Butterfly and CV) BT Evo, TC and XL 76-on.

**44049**



## T/L Fuel Fitting Covers 00-03 FI

Chromed billet aluminum cover features a milled emblem and mounting hardware. Cover is contoured to hide fuel tank fittings on fuel injected models.

**63015** Touring 02 (62884-02)

# Gas Line Filters



## Russell Street Fuel Filter

This chromed billet aluminum bi-directional filter is vibration, heat and shock resistant. This easy to install, compact filter features a replaceable 40 micron bronze element that traps tiny particles preventing damage. Can be used with pump gas but is not compatible with alcohol.

**77692** 1/4" line

**77693** 5/16" line

**77695** Replacement element for all Street filters



## Mini Gas Filters

These clear mini Gas Filters completely come apart so that dirt trapped in filter may be discarded. The design of this filter helps to prevent water and other agents from passing to the carburetor. The ends are chromed.

**942** 1/4"

**943** 5/16"



## Chrome High Performance Gas Filters

Alloy case fuel filter with replacable bronze filter element. Available in 2 fuel sizes. Outstanding filtration.

**PCP** **Size**

**77044** 1/4"

**77045** 5/16"



## Crank Vent

Features replaceable umbrella valve.

**PCP** **Item**

**77070** Canister



## Chrome Billet Filter

Radius style fits 5/16" hose with replaceable filter.

**77047**



## Chrome Billet Fuel Filter

Features high flow design for 5/16" line

**77048**



## Sifton Chrome Compact Fuel Filter

Machined aluminum unit features a stainless steel filter that is washable and reusable. These filters are available in mini (1.750") or micro (.875") sizes.

**Mini** **Micro** **Fuel Line**

**77037** **77039** 1/4"

**77038** **77040** 5/16"

## Chrome Transmission Vent Canister

Accepts 5/16" or 3/8" hose.

**59523**





# Petcocks



## Mini Petcocks

These petcocks are 1/4" NPT with a ball shut off

**73548** With reserve, straight down

**73549** With out reserve, 90 degree



## Straight Petcock

Natural alloy petcock has straight outlet with nut, washer, re-serve position and nylon filter screen. Use with stock or custom tanks with a 22mm outside thread. Fits FXR 82-94, FL, FX 84, FXST 84-94, FLST 86-94, FXD 91-94 and XL 86-95.

**73769**



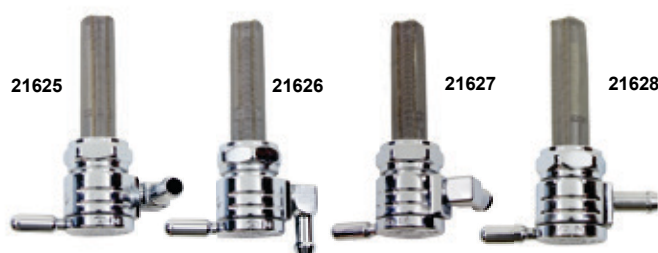
## Black Petcock with Screen & Nut

Includes nylon filter screen, washer and reserve position. For use with stock or custom tanks with a 22mm outside thread. Fits FL, FX 84, FXR 82-94, FXST 84-94, FLST 86-94, FXD 91-94 and XL 75-95.

**21085** Straight

**21131** Left (forward)

**21132** Right (rear)



## Sifton Chrome Ball Petcocks Most 75-94

Features a stainless steel ball mechanism that provides a secure on/off seal and prevents valve from freezing in the open or closed position. With 22mm nut for 1975-on and four outlet positions for any application.

**PCP** **Outlet Position**

**21625** Backward

**21626** Downward

**21627** Forward

**21628** Straight



## Chrome Billet Petcock

Features on/off and reserve positions. Fits 75-94 and XL 75-95. 3/8" outlet & 20mm nut

**PCP** **Side**

**59810** Left

**59811** Right

**59812** Downward



## Black Hex Petcocks

5/16" NPT brass hose spigot with screen and chrome on/off handle. Fits FXR 82-94, FXD, 91-94, Softail 84-94 & XL 75-95.

**PCP** **Application**

**21136** Inward facing

**21137** Down facing

# Petcocks



## Chrome Late Style Gas Petcock

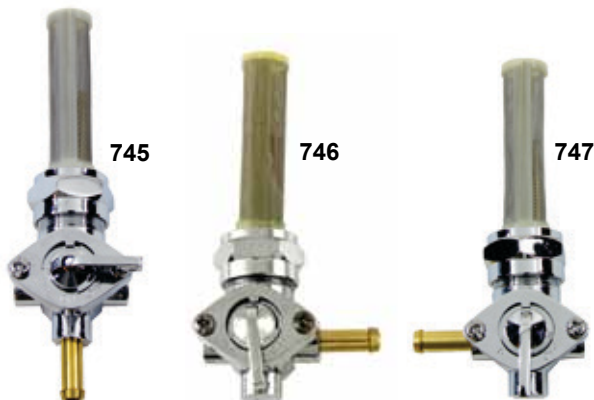
Has Reserve and Screen. Fits FLH, FX 75-06 and Sportster 76-06.

- 938** Straight outlet (62168-81)  
**689** 90 degree outlet

### Hardware

#### PCP Description

- 21611** Strainer with reserve tube (62166-81) (each)  
**21613** Gasket (62172-75) (10 pack)  
**79443** James, as above (20 pk)  
**12593** Chrome nut (62161-02) (each)



## Chrome Late OEM Type Petcocks

Including filter screen washer, and reserve position for 75-06 gas tank with male thread outlet.

### PCP Outlet

- 745** Straight (62168-81)  
**746** Right (rear) (62167-81)  
**747** Left (forward) (62169-81)



## Accel High-Flow Fuel Spigots, all 71-92 Carbs

Accel recommends the installation of a high flow valve with any modification to the motorcycle that increases RPM and acceleration. Spigots features a 100 micron screen filter, on/off, reserve positions and a chrome housing.

### PCP Type

- 28000** Straight  
**28002** Rotates horizontally to allow positioning of the outlet at any angle for custom hose routing



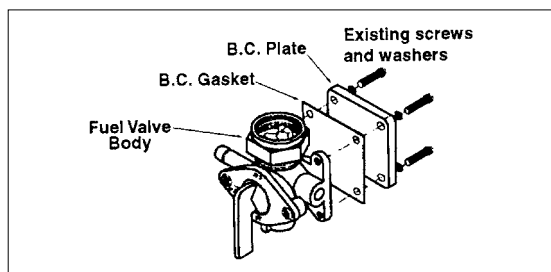
## Replacement Petcocks

- 29403** Stock style with vacuum BT 95-01 (61338-94D)  
**73767** Black petcock fuel valve FLT 02-06 (61338-02)  
**21135** Stock black w/nut & screen XL 95-on

## "Viton" Petcock Seals 75-94

This special seal fits behind gas tap faceplate to help eliminate the swelling problems associated with the various types of fuels available (including Ethanol type gasoline).

- 25280** 10 pack



## Fuel Valve Body Vacuum By-Pass Kit

Includes plate, gasket, vacuum hose plug and instructions.

- 41022**

## Petcock Adapter Set

Petcock adapter set is used to convert the Magneti Marelli injection to a carburetor system. Can be used with any 22mm petcock. Fits FLT 95-01. Set of 2.

- 73757**



## Delphi FI to Carburetor Conversion Fitting

Includes gas tank fitting to eliminate Delphi fuel injection and use a carburetor and late style petcock.

- 10626**



## Weld In Petcock Inserts

- | PCP          | Type   | Thread  |
|--------------|--------|---------|
| <b>73725</b> | Male   | 75-on   |
| <b>73726</b> | Female | 3/8 NPT |



## Pingel Inline Fuel Filters

These filters are available in chrome or polished finish, and are 1 1/8" long for a 5/16" hose.

- 21618** Chrome
- 21619** Polished
- 21620** Element



## Pingel Vacuum Fuel Valve

This vacuum operated fuel valve is a direct OEM replacement and has the highest fuel flow of any vacuum style valve on the market. When the valve is left in the "ON" position with the motor off, the fuel flow will be shut off automatically. These valves are chrome plated and are metric with adaptor nut.

### PCP Application

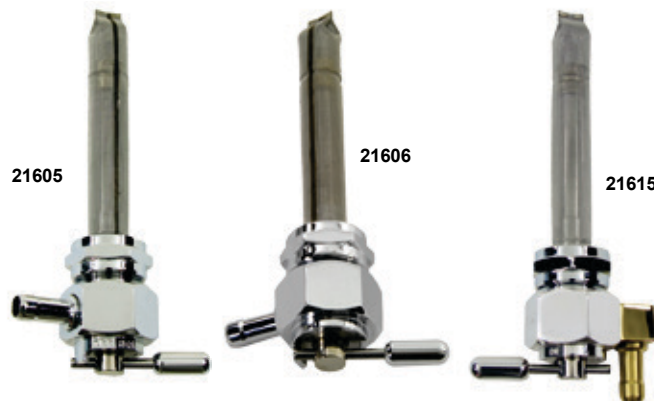
- 21622** Left side mount hose outlets facing forward
- 21623** Left side mount hose outlets facing to the rear
- 21624** Left or right side mount hose outlets down



## Pingel Fuel Valve Rebuild Kit

This kit was designed to work with Pingel's single or dual outlet fuel valves. The Kit includes: rebuild parts for three valves, all tools needed, and instructions.

- 21616** Fuel valve rebuild kit, complete for 3 valves
- 21617** Fuel valve rebuild components for 5 valves



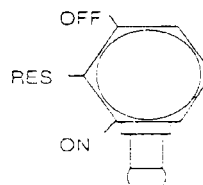
## Chrome Pingel Power-Flo Gas Valves

Body of 1-1/8" hex with a total length of 1-1/4". Hose adapter outlet is available with 5/16" hose ID size. O-rings insure leak proof seal. Stainless steel components with stainless steel fuel screen are included. 1975-94 type includes nut.

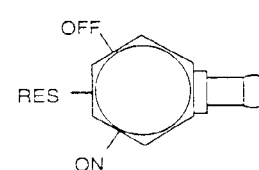
Chrome	Polished	Years	#	Description
<b>21601</b>	<b>21609</b>	75-94	U	with nut
<b>21602</b>	<b>21615</b>	75-94	D	with nut
<b>21605</b>	<b>21607</b>	75-94	L	with nut
<b>21606</b>		75-94	R	with nut
<b>21610</b>				Adapter Nut Only

**Pingel Fuel Delivery Systems Are Covered Under One Or More Of The Following Patents: 4,250,921; 4,957,138; other patents pending.**

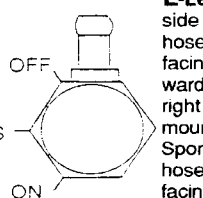
**R-Right:** Left side mounted, hose outlet facing back.



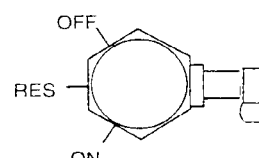
**U-Under:** Left side mounted, hose outlet facing right.



**L-Left:** Left side mount, hose outlet facing forward or right side mounted for Sportsters, hose outlet facing rear.



**D-Down:** Left side mounted, hose outlet facing right and down.



The appearance of these fuel valves are a trademark of Pingel Enterprise, Inc. Patents pending. Made in the USA.

## Pingel Power Flow Valve

One piece, billet, brass valve has a single outlet with "U" type reserve and a -6AN threaded fitting for fuel line hook up using S.S. hose and fittings. Line and S&S E & G carb fitting sold separately.

- 21621** Petcock
- 16271** S&S fitting





# Air Filters



## For Big Twin Models

Uni	Accel	K&N	Depth	Fits
		77724		14-16 FLHT-FLHR-FLHX-FLTR & Trike, 16-17 Softail (not FLSS-FLSTFBS)
		77725		FLS 12-15, FXS 11-13, FLSTSB 08-11, FXDB 13-16, (29314-08)
-	-	77729		TC 99-01 dressers with EFI (29462-99)
-	-	77734	1-3/4"	Twin Cam 99-06 carb, Softail 01-15 (except FLS-FXS-FLSTSB),
				02-07 EFI Touring, Dyna Glide 04-07 (29461-99 & 29400042)
-	-	77733		BT 95-98 with EFI (29291-95)
77750	77716	-	3-1/4	FXD 93-98 round not EFI (29259-93)
6674		77732	3-1/2	FLT 90-00, Softail 90-00, FXD 91-98 round (not EFI) (29330-96)
		77731	3-1/2	Softail-FXR 86-89 round (diamond shaped filter) (29259-86)
		77730	3	FXST-FXR 84-85 round (29259-83A)
-		77748		Dyna 08-16 FLD 2012 ((except 06-17 FXDLS & 13-15 FXDB) (29191-08)
-		77749		FLHT, FLHR, FLTR, FLHX, FL Trike 08-13 stock (29633-08)
		77787		FLT/HT/HR/HX-FLTR 08-16 & Softail 06-17 S/E back plate (29244-08)
		77722		V-Rod, VRSC 2002-16 stock square (29437-01)

## For XL Models

Uni	Accel	K&N	Ht.	Fits
6669		77736	3	XLH 88-03 (except XL53C 99-03) oval (29036-88B, 29931-96)
6667	77702	77735	3-1/4	Evo 86-87 oval (29036-86)
		77737		XL 04-17 rectangular (not 13 1200V) (29331-04)
		77723		XR 1200X-XR 74ci 08-12 stock rectangle (29377-08)



## For Aftermarket Models

Uni	K&N	Ht.	Fits
6670	77738	2-3/8	S&S Super B & D
6673	77739	2-1/2	S&S Super E & G
77719*	-		Kool blue for S&S Super E & G
6672	-	2	# 827 Air cleaner (Dragtron)
-	77740		Mikuni HSR 40 smoothbore
-	77741		Mikini HSR 42/45 smoothbore
-	77742		Screamin' Eagle round (29055-89) (HD-0600), FLT 85-99, FXD 91-99, FLST/FXST 84-99
-	77743		Screamin' Eagle tapered (29442-99) (HD-0800)
	77788		Screamin' Eagle tear drop Dyna 08-on (29385-08)
	77726		Screamin' Eagle CVO 10-17 Dresser (26970-09)



\* Accel

# Air Filters



## Reusable Paper Air Filters

These washable cotton air filters have the original shape and styling to ensure a proper fit.

### PCP Application

- 77772** FLST/C/F/N, FLT/C/U, FLHT/C/P/U, FLHS 90-98; FXDB-D/DC 91; FXDB-DL WG 91-96, FXLR 90-93, FXR/S/S-CON 91-94, FXST 84-90, FXSTS 89-93, FXSTC 90-95 (29259-93, 29259-91A, 29330-96)
- 77773** TC Touring with carb 99-17 and EFI Touring 02-07, all Softail 01-11, Dyna 99-07 (29461-99) (except Dyna Glide 08-16, FLSTSB 08-11, FXS 11-14, TC 99-01 with EFI, FLS 12-16, Dresser & Trike 08-17)
- 77776** Round S&S type "B"
- 77782** Round S&S type "E & G"
- 77777** Tapered Velo type and S/E TC 99-on (except 08-12 Dresser & Dyna) (6-1/4 OD x 2-1/4 Wide)
- 77778** Sifton air power, FLT 85-99, FXD 91-99, FXST 84-99, FXR 84-92
- 77780** Touring EFI 99-01 (29462-99)
- 77784** S/E FLHTCUSE/FLHRSE 08-14 (29244-08)
- 77783** FLHT, FLHR, FLTR, FLHX, FL Trike 08-13 (29633-08)
- 77751** FLT, FLHT, FLHR, FLHX, FLTR & Trike 14-16, FXST, FLST 16-17 (2900045)
- 77786** FXD/B/C/F/L & FXDWG 08-17 (except FXDB 13-17), FXDLS 16-17 (29191-08)
- 77775** XL 88-03 (29036-88A)
- 77781** XL 04-13 (except CR 1200X) (29331-04)
- 77717** XL 14-on (29400015)
- 77752** FLSTSB 08-11, FXS 11-13, FLS 12-15, FXDB 13-15 (29314-08)
- 77720** M8 FLHT-FLHR-FLHX-FLTRX-FLTRU/Trike 17-19 (29400212)



## S&S Air Filter Element

S&S Super E & G filter elements are made with the same filtering material used in many stock cars and drag racers. Removes more airborne particles while allowing better air flow. More durable and lasts longer, trapping nearly twice as much dirt before becoming clogged. Can be washed and reused several times before it needs to be replaced.

**170054**



## Hi-Flow Air Cleaner Element

Fits S&S E air cleaners. Kit includes washable 3.5" high filter and mounting studs.

**77747**

## K&N Aerosol Recharger Service Kit

A six step maintenance system designed to recharge any K&N air filter. Restores air flow efficiency. Includes 6.5oz spray oil and 12oz filter cleaner.

**21832**



# Air Filters



## S&S Single Bore Tuned Induction System

Bolt-on system gives twice the performance of stock intake systems and increases horsepower and torque across the RPM range. Uses air column inertia and carefully timed gas dynamic pressure waves to increase performance. Includes high flow washable and reuseable cotton media. Chrome with red filters.

### S&S Single Bore Tuned Induction System Kits

PCP	Fitment/Fuel Delivery
1700085	BT 99-17 Single bore EFI (except 17 Touring, FXD35, FXDWG 99-08 & FXDC/F 09)
1700087	BT 84-17 Stock CV or EFI Delphi (except 17 Touring)
1062448	BT, Tri-Glide and CVO 08-17 w/stock bore Throttle By Wire (except 17 Touring)

## S&S Washable Nylon Air Filter Cover (each)

Water resistant covers keep out large debris allowing the air filter media to stop small dirt particles from entering your engine.

- 1060247 Filter cover
- 171020 Red filter
- 171023 Blue filter



## S&S Air Stream Stealth Air Cleaner Kits

Features air directional stinger cone inside the filter for a quieter ride. Can also be used with your stock H-D Twin Cam 88, 96 or 103 air cleaner cover or other S&S custom designed covers. With chrome covers.

### S&S Stealth Air Cleaner Kit With Airstream Cover

PCP	Fitment	Fuel Delivery
1700056	BT 99-06 Softail CVO 07-10	Stock CV & EFI Delphi (except '99 Softail carb & Throttle By Wire)
1700054	Tri-Glide & CVO 08-16 - stock bore	Stock EFI & Throttle By Wire

1700118



1700122



## S&S Air Stream Cleaner Covers

Tear drop shaped steel covers fits S&S Super Stealth air cleaner kits. Covers feature screened vent for more air flow- without sucking in road debris or rain.

- PCP Finish
- 1700118 Chrome
- 1700122 Black



# S&S Air Cleaner

## S&S Teardrop Air Cleaner for Twin Cams

With stock carburetor and for 2002 fuel injected models. Owners of 99-on Twin Cam style engines equipped with stock CV carburetors, 01-on fuel injected Softails, and all 2002 fuel injected models can enjoy the performance benefit and good looks of an S&S teardrop air cleaner. S&S backplate bolts directly to the stock CV carb or the single throat style EFI throttle body.

Like other S&S air cleaners for stock carbs the Twin Cam style air cleaners feature a uniquely designed backplate with air horn style radiused entryway and a dimpled cover with air directional cone on the inside. Both features help maximize air flow by giving intake air an efficient, easy path to follow into the carburetor or throttle body. Harmful particles are captured by the foam filter element which can be washed out and reused. The air cleaner cover is finished in show quality chrome, which compliments the appearance of most motorcycles. Kits include instructions and all parts and hardware needed to complete the installation.



Application	Stock CV or EFI		Super E&G
	Chrome Cover	Gloss Black	Chrome Cover
BT 84-92			170399
BT 93-06 carb Softail CVO 07-10 stock EFI with 110" engine	170450	1700181	
BT 93-06 carb			170404
BT 99-06 carb			170403
TC 08-17 103", 110" Stock EFI Tri-Glide & CVO 08-16 stock bore Throttle by Wire	1062091		
XL 86-90			170399
XL 91-03	170448	1700182	170404
XL 04-16	170448	1700182	170428
Buell 94-02	170105		
Chrome cover only for Super E & G models			170378



**S&S Paper Super E/G Element**  
170054



## S&S Super E & G Velocity Stack Kit

Kit includes polished stack, bracket, and enricher knob.  
**170485**



## S&S Super Allen Screw Set

Includes chrome bowl air cleaner and cover screws  
**24078** Super E & G



## Throttle Cable Adapter Kit

For use when fitting pre 1990 Edelbrock Qwiksilver carb on BT 90-98 or XL 88-98 with OEM throttle cables. Use on 96-on S&S series carb to allow use of OEM cables.  
**16535**

## S&S Air Cleaner Cover Screws

Set of 3 chrome plated screws.  
**72518** Phillips 1/4-20 x 1 countersunk



## S&S Throttle Cable Adapter Block

Allows use of stock 96-on throttle cables on Super E carbs.

**16525** BT

**16536** XL



## S&S Air Cleaner Mounting Screws

Chrome, buttonhead, countersunk allen screws. 3 Pack.  
**9980**



## S&S Style Carburetor Chrome Allen Screw Kit

Chrome plated smooth head allen screws replace the stock screws for a more decorative finish. Fits E and G models.

**72596**

## Preston Enricher Assembly for S&S

This can be used on S&S Super E & G carbs when an aftermarket air cleaner or velocity stack is used. Does not require lever assembly. Features full on or full off operation only.

**73528**



# S&S Super E & G



## Compatible with Stock Throttle Cables on all Late Model Big Twins.

For the sake of safety, all S&S carbs are designed to use a two pull open/pull closed throttle system. Super "Shorty" carbs for Big Twins are compatible with stock 1981-on throttle cables. Carb kits for late model Big Twins, originally equipped with constant velocity (CV) carbs, include a taller throttle cable guide bracket that accommodates the longer CV style cables. Kits for earlier model Evolution Big Twins which could have been equipped with either a butterfly or CV type carb include both a shorter bracket for butterfly style cables and the tall bracket for CV style cables. Due to inadequate frame clearance the taller throttle bracket can not be used on Sportsters. Therefore, late model Sportsters and Buells require the installation of earlier butterfly style throttle cables.

S&S Super E and G Complete Carburetor Kit Selection Chart W/Crome Cover			
Application	Year	Standard Super E Kit	Standard Super G Kit
BT	84-92	<b>110407</b>	
	93-99	<b>110419</b>	
Sportster	86-90	<b>110408</b>	
	91-03	<b>110409</b>	<b>110429</b>
	04-06	<b>110470</b>	
Twin Cam	99-05	<b>110450</b>	
Carb Only	All	<b>110420</b>	<b>110421</b>

Note: OEM stock CV carb being replaced with an "E" or "G" will require use of the push-pull cable set-up, as stock on 81-89.



## Cruise Control

Super "Shorty" carbs can easily be installed on motorcycles equipped with factory cruise control. Cruise control adapter kits are available for 93-97 and for 98-03 later models. The S&S cruise control kits make any Super E or G carburetor compatible with the stock H-D cruise control. Kits include all parts and instructions needed to complete the installation.

**112926** 93-97

**112927** 98-99



## S&S Single Bore Tuned Induction System

- Bolt-on performance increases HP & torque across
- Smooth intake tract & carefully selected tuned lengths
- High flow washable filter with twice the filtering area
- Chrome runner and red filters
- Fits Sportsters 86-15 with stock CV or EFI or S&S carb

PCP	Application	Fuel Delivery
<b>1700089</b>	XL 91-06	Stock CV & EFI
<b>171020</b>	Red filter (each)	



# S&S Super Rebuild



S&S Carb Type	Carb Model	Body Rebuild Kit	Accelerator Pump Kit	Master Rebuild Kit
Super Series	Super E Gas	112906	112918	112923*
	Super G Gas	112907	112918	112924*
	Super A & B Gas 83-on (wire type mechanism)			112909
Two-Throat	83-on (wire type mechanism)	112905		

\* Note: When these super master rebuild kits are used to update an early Super E or G equipped with a 360 degree variable position gas inlet fitting, S&S fuel line, #190474 or 190475, with a 90 degree formed end must be used and ordered separately

## Main Jets (Sold Each)

Use when installing new exhaust system or just tuning for better performance and mileage. For LS, Super Gas & alcohol, and Two Throat (Series #72)



### Main Jets.

PCP	Size	PCP	Size	PCP	Size	PCP	Size
16022	.044	16028	.056	16036	.072	16044	.088
16023	.046	16029	.058	16037	.074	16045	.090
16024	.048	16030	.060	16038	.076	16046	.092
16025	.050	16031	.062	16039	.078	16047	.094
16026	.052	16032	.064	16040	.080	16048	.096
16027	.054	16033	.066	16041	.082	16049	.098
		16034	.068	16042	.084	16050	.100
		16035	.070	16043	.086	16051	.102
						16052	.104



## S&S Main Jets

PCP	Size (5 pack)
117231	.062
117232	.064
117234	.068
117238	.076

## Carb Replacement Float

Replacement float for S&S B, E, and G carbs with C-type wire needle and seat. 73768

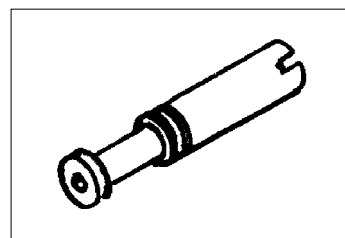


## Intermediate Jets

Series 94 jets used to bleed air. Fits all super gas carburetors. Sold Each

### Intermediate Jets

PCP	Size
16006	.025
16007	.028
16008	.0295
16009	.031
16014	.032
16010	.033
16011	.036
16012	.040



## Main Carburetor Jet Assortment Kit

Kit includes 7 intermediate jets and 12 main jets for S&S B and S&S E carbs. Includes one each of intermediate jet sizes .025", .0265", .028", .0295", .031", .032", .033" and one each of main jet sizes .062", .064", .066", .068", .070", .072", .074", .076", .078", .080", .082", .084".

16131

# S&S Super E & G



## S&S Throttle Assemblies

### 1981 and Earlier Chassis

Fits 1" diameter handlebars, S&S Super E & G; and all other butterfly type carbs with 81-96 H-D style throttle linkage. Cables measurements are taken from throttle grip to end of cable housing, barrel fittings are soldered in place.

**190449** 48" cables

**190448** 39" cables

**190482** 42" cables

## S&S Throttle Cables

Open Side	Close Side	Total Length	Hsg. Length	Description
<b>190432</b>	<b>190433</b>	36"	32"	To 95, FX & FL 81-85
<b>190436</b>	<b>190437</b>	36"	32"	883-1200 XL 96-on
<b>190434</b>	<b>190435</b>	39"	35"	Softail (FXSTC, FXST, FLSTC, FLSTF) to 95
<b>190438</b>	<b>190439</b>	39"	35"	FXR 86-94, Dyna 93-95
<b>190446</b>	<b>190447</b>	42"	38"	FXST/C, FLSTC, FLSTF, Dyna 96-on
<b>190440</b>	<b>190441</b>	42"	38"	To 95 custom use
<b>190462</b>	<b>190463</b>	48"	44"	96-on custom use
<b>190464</b>	<b>190465</b>	48"	44"	All FLT to 95
				All FLT 96-on and custom applications

Note:

1. Actual cable fitment may vary with the use of aftermarket bars, frame modifications, etc.
2. The "Total Hsg" length includes both the bent metal housing and vinyl carrier together. "Vinyl Hsg" length is for the carrier only



## S&S 1" Spacer Support Kit

Required for Evolution or Twin Cam engines with head breather style heads using S&S Super E or G air cleaners.

**160058**



161658

## S&S Manifold Kit for 84-89 80" Evolution

Converts stock rubber compliance fittings to a more rigid mount system, kit includes S&S manifold, mount flanges, 2 specially molded O-rings, and 2 .350" spacers for spacing out the stock air cleaner or carb mount bracket. This manifold is included in our super kit for Evo 1340cc.

**161658** BT Evo



117272

**117270** Low range jet pack for jetting most stock and moderate performance engines up to about 93" displacement

**117271** High range jet pack for jetting some stock and all performance engines.

**117272** Master jet pack for jetting all Super E and G equipped engines (this jet kit will also service most engines equipped with Super Bs)



## Quickshot for S&S Super "E" & "G" Carbs

Bolt on accelerator pump that allows the fuel spray to be adjusted for volume and duration. Custom application for all S&S Super "E" and "G" carburetors.

**41028**



## S&S Breather Conversion Kits

Conversion kits include banjo fittings that are sealed with silicone washers which offer a much better seal and greater durability than o-rings. These kits also offer easier air cleaner servicing because the banjo fitting and breather hose are mounted on the cylinder head before the air cleaner back plate is installed and do not need to be removed during servicing. Fits Super E and G cleaner kits 93-99 BT, 90-on XL and can be used to retrofit earlier S&S air cleaners. XL kits include a special insulator block and longer manifold bolts.

**170486** BT 93-99

**170487** XL with 1-7/8" carbs 91-03

**170488** XL with 2-1/16" carbs



## S&S Manifold #341

For cylinder lengths of 4.650". Fits S&S Super E, Keihin and Bendix.

**161650** 1-7/8" Rigid mount for XL 86-03



## S&S 1-7/8" Rigid Mount V2 Manifold FL 84-99

For cylinder length 5.375", 88" and 107" BT 84-99.

**161626**



## S&S Super E Chrome Cover for 5 Gallon Tanks

**170372**



## S&S Super E Chrome Cover FL 93-99

**170378**

## S&S Paper Super E/G Filter

**170054** Standard

**170055** +1" Taller



## S&S Fuel Line Kit

• Swivel retrofit kit includes fuel line, gasket, clamps, & fittings

• Fits Super E/G

**1900005**



## S&S Enricher

S&S Super E and G features 3 position with pike knob.

**73731**





## Insulator Blocks

1-7/8" Opening with mounting hole pattern that is identical to stock pattern on Tillotson, Bendix and Keihin butterfly type carbs. Use with all S&S 1-7/8" manifolds. Includes o-ring.

**160491** 1/4" Thick

**160497** 3/8" Thick Super E

2-1/16" Opening. Use with all S&S 2-1/16" manifolds, includes o-ring.

**160492** 1/4" Thick

**160498** 3/8" Thick Super G

2-1/4" Opening. Use with all S&S 2-1/4" manifolds, includes o-ring.

**160499** 1/4" Thick



## Adjustable Main Jets For S&S

Fits in the float bowl drain plug below the main metering jet. The recommended main jet is 100 to 104.

## Adjustable Enrichener for S&S

Replaces the stock fixed enrichener, adjusts as bike warms up, and also makes for easier starting. O-rings and instructions included.

**PCP** **Description**

**1254** Enrichener

**3823** Main jet for Super B

**530452** Jet installer and removal tool on all B & E carbs



## S&S Throttle Cable Brackets

These brackets allow the use of stock type cable on S&S E & G carbs.

**73587** Fits 81-89 Short type

**73588** Fits 90-on Long type



## S&S Bowl Gaskets

**PCP** **Application**

**112387** Super E and G (5 pack)

**112091** Super B and D (10 pack)

## Sifton Carb Hop Up Kit

Kit includes emulsion tube and bomb sight annular booster tube for all S&S E carbs.

**73505** Kit



## S&S Adjustable Carb Bracket for Super B Models

**73589**



## S&S Breather Vent Hose

Each.

**170339**

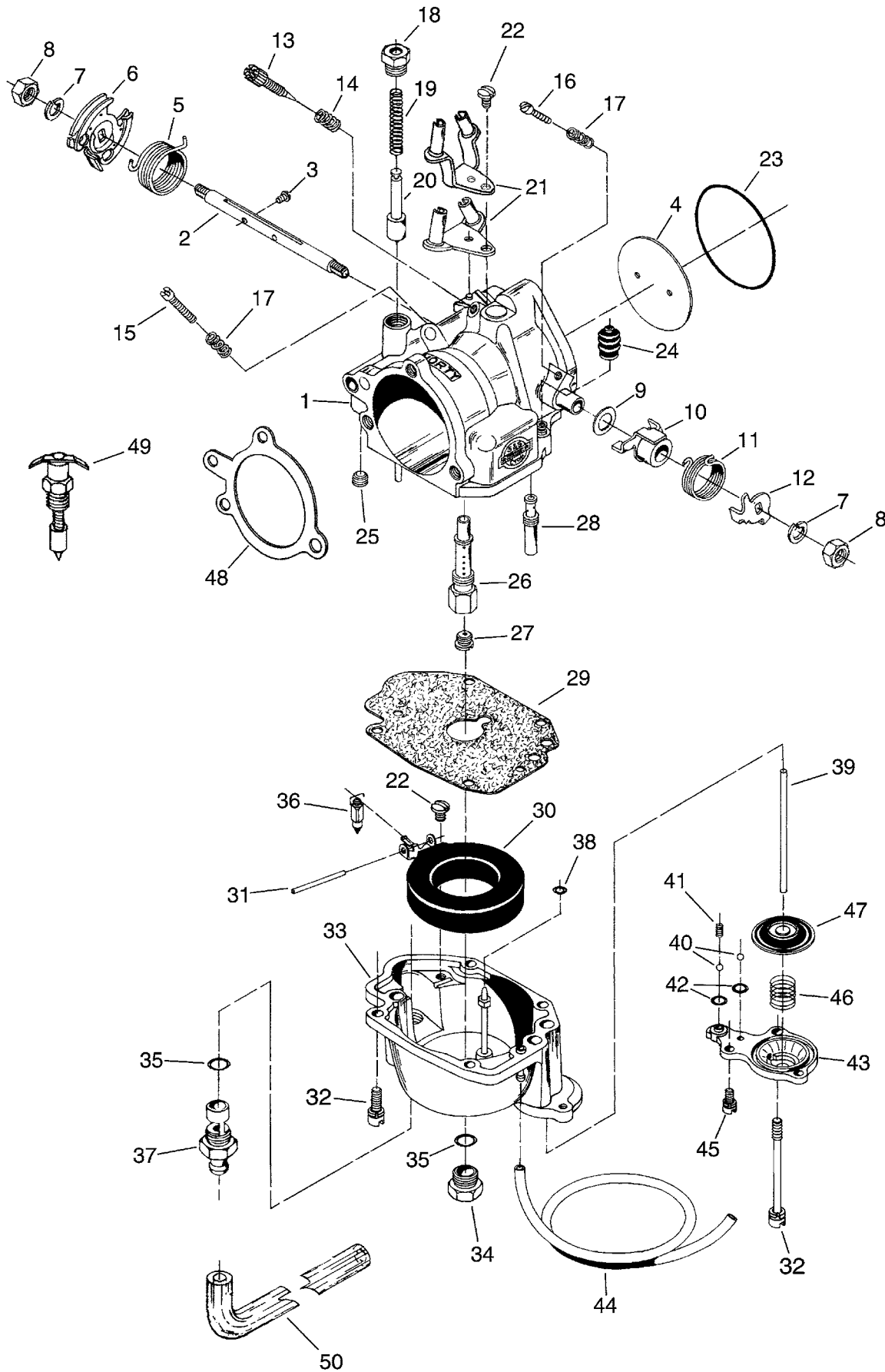
## Sifton Enrichener for S&S

Fits Super E & G and B carbs, includes chrome knob.

**73586**



# Super E Replacement Parts



# Super E Carburetor Replacement Parts

- |   |   |  |
|---|---|--|
| 1. Carb body assembly<br>1-7/8" E ..... <b>112381</b>   | 24. Bellows seal (5 pack) ..... <b>112279</b>   | 48. Gasket, backing plate<br>(10 pack) ..... <b>170383</b>                               |
| 2. Throttle shaft<br>(includes 2 plate screws)<br>1-7/8" E ..... <b>N/A</b>   | 25. Bowl vent plug (10 pack) .... <b>500151</b>   | 49. Enrichment device<br>Use with air horn only ... <b>112084</b>                        |
| 3. Throttle plate screw (2-required)<br>(10 pack) ..... <b>500064</b>   | 26. Main discharge tube ..... <b>112085</b>   | 50. Fuel line w/90 degree bend*-19"<br>Use with 112465 or 112466<br>..... <b>1900005</b> |
| 4. Throttle plate<br>1-7/8" E ..... <b>112055</b>   | 27. Main Jet .... see pages 9-34 to 9-35  |  |
| 5. Throttle return spring ..... <b>N/A</b>  | 28. Intermediate jet ..... see page 9-34  |  |
| 6. Throttle spool ..... <b>N/A</b>  | 29. Bowl gasket (5 pack) ..... <b>112387</b>  |  |
| 7. Throttle shaft lock washer (2 required)<br>(10 pack) ..... <b>507073</b>   | 30. Float ..... <b>112187</b>   |  |
| 8. Throttle shaft nut (2 required)<br>(5 pack) ..... <b>N/A</b>   | 31. Float pin (5 pack) ..... <b>112370</b>  |  |
| 9. Throttle shaft nylon washer<br>(10 pack) ..... <b>507072</b>   | 32. Bowl screw (10 pack)<br>10-24 x 3/4" (3 used).... <b>500063</b><br>10-24 2-3/8" (1 used) <b>500061</b>  |  |
| 10. Pump actuator lever ..... <b>112376</b>   | 33. Carb bowl assembly ..... <b>112388</b>  |  |
| 11. Actuator spring ..... <b>N/A</b>  | 34. Bowl plug (5 pack) ..... <b>112092</b>  |  |
| 12. Pump actuator arm..... <b>N/A</b>   | 35. Seat o-ring (required w/112465 &<br>112466 only when replaces 360 degree<br>style fuel inlet (10 pack) ..... <b>508095</b>  |  |
| 13. Idle mixture screw (Each) <b>112378</b>   | 36. Needle<br>1-7/8" E & 2-1/16" G .. <b>112195</b>   |  |
| 14. Idle mixture screw spring<br>(10 pack) ..... <b>112060</b>  | 37. Seat<br>1-7/8" E & 2-1/16" G (Replaces 112347)<br>Uses 112195 needle ..... <b>112465</b><br>Racing only (replaces 112348)<br>uses 112197 needle ..... <b>112466</b> |  |
| 15. Idle speed screw (10 pack) <b>500150</b>  | 38. Ejector nozzle o-ring<br>(10 pack) ..... <b>508096</b>  |  |
| 16. Pump adjustment screw<br>(10 pack) ..... <b>500146</b>  | 39. Pump pushrod (5 pack) .... <b>112393</b>  |  |
| 17. Idle speed/pump adjuster spring<br>(10 pack) ..... <b>112053</b>  | 40. Ball check 2 required<br>(10 pack) ..... <b>508125</b>  |  |
| 18. Plunger nut (Each) ..... <b>112372</b>  | 41. Ball check spring (5 pack) .. <b>112392</b>   |  |
| 19. Plunger spring (10 pack) .... <b>112359</b>   | 42. Pump cap o-ring (2 required)<br>(10 pack) ..... <b>508100</b>   |  |
| 20. Fast idle plunger ..... <b>112343</b>   | 43. Pump cap assembly ..... <b>112389</b>   |  |
| 21. Cable guide assembly<br>For use w/butterfly style cables<br>..... <b>112339</b><br>For use with CV cables-<br>(constant velocity style) . <b>112338</b> | 44. Overflow hose per 24"<br>(5 pack) ..... <b>190263</b>   |  |
| 22. Cable clamp/ float pin screw<br>(10 pack) ..... <b>N/A</b>  | 45. Pump cap screw 8-32 (2 required)<br>(10 pack) ..... <b>500098</b>   |  |
| 23. O-ring<br>1-7/8" E (10 pack) ..... <b>508094</b><br>2-1/16" G (10 pack) .... <b>508093</b>  | 46. Diaphragm sprig (10 pack) .. <b>112278</b>  |  |
|   | 47. Diaphragm ..... <b>112282</b>   |  |

\* Early Super E carburetors equipped with a 360 degree fuel inlet that require service must be converted to the bottom feed style fuel inlet. To update production Super E and G carburetors equipped with a 360 degree style inlet use 1 of #508009 o-ring, 1 of #112465 seat, and 1 of #1900005 fuel line.





## For S&S E Chrome Velocity Stack Kit

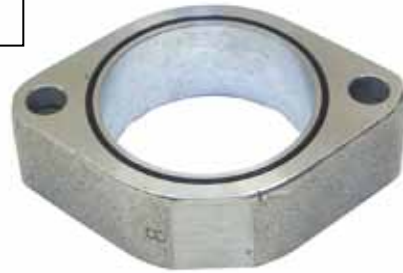
Includes bracket with integral passages. Enricher knob included.

**PCP Item**  
**21791 EV and TC-88**



## Chrome Alloy Velocity Stacks (not by S&S)

PCP	Size	Application
59007	2.5"	S&S "E/G"
59008	4"	S&S "E/G"
59009		Chrome choke knob
59010	2.5"	CV Keihin FLT, FLST, FXD, FXST 90° FXR 90-94, XL 88-on



## S&S 1" Manifold Spacer Block

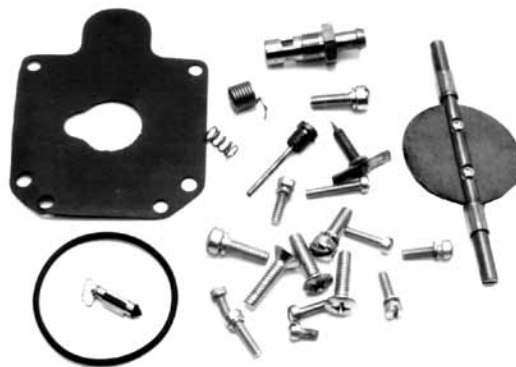
**160357** Sold each



## Super Gas Model A & B Body Rebuild Kit

Use on all S&S 1-7/8" Super carbs. Each kit contains 1 ea. throttle shaft, 2 ea. throttle shaft bushings, 1 ea. throttle plate, 1 ea. throttle return spring, 2 ea. throttle plate screw, 1 ea. O-ring, 1 ea. bowl gasket. These kits are for super "A" "B"

**41005** Preston



## Super Gas Model A & B Master Rebuild Kit

Use on all 1-7/8" Super Carbs. Each kit contains 1 ea. throttle shaft, 2 ea. throttle shaft bushings, 1 ea. throttle plate, 1 ea. throttle return spring, 2 ea. throttle plate screw, 1 ea. O-ring, 1 ea. bowl gasket. These kits are for super "A" "B"

**112909** S&S

**16015** Preston

# CV Carbs



## Black 40mm CV Carburetor Assembly

Fits FLT, FXD, FXR 88-16, FXST, FLST 88-17 and XL 1200 88-06. Does not include accessories. Installed main jet is #190.  
21147



## Power X-Wing Fuel Air Intake Inducer

Boyesen bolt-on upgrade that eliminates sluggish throttle response and increased acceleration. Does not require rejetting or remapping. Can gain up to 4 horsepower and 5 ft/lb. of torque.

### PCP Application

- 41055** EFI 01-05 FLT, FLST, FXD, FXST, 07-on XL  
**41056** EFI 06-07 FLT and 06-on FLST, FXD, FXST  
**41057** EFI 08-on FLT  
**41058** Custom application for S&S Super E and G carbs



## EZ Quick Tuner Kits for CV Carbs

No-drill installation on stock to heavily modified engines. Kit includes brass jets and instructions.

### PCP Application

- 73762** FLT, FLST, FXST 89-98, FXR 91-94, FXD 91-98  
**73760** FLT, FLST, FXD, FXST 99-on  
**73758** XL 1200 88-03  
**73761** XL 88-03  
**73759** XL 04-06



## EFI Check Valve Rebuild Kit

Use to rebuild the check valve on BT 01-on models with electronic fuel injection. Kit includes check valve, o-rings and stainless steel spring.

73754



## Mikuni HSR 42 and 45 Total Kits for BT

These kits are complete with all required parts for installation. Kits include HSR 42mm or 45mm carburetor, intake manifold, rubber flange, K&N filter, chrome cover, breather kit and mounting hardware. 90-on models use stock throttle/idle cable and 84-89 models require 90-on cables.

### 42mm

#### PCP Description

**59998** BT 84-99

### 45mm

**59994** TC 99-06



## CV Tuner Kits

A complete jet tuner kit that includes all necessary needles, slow jets, and main jets to make your CV carburetor run perfectly.

### PCP Application

- 41064** XL 88-03  
**73732** FLT, Softail, FXD 95-06  
**73735** FLT, Softail, FXD 99-06



## Carb Thunderslide Kit

Stage 7 kit for 80+hp engines. Designed for engines with stock or aftermarket air filter & exhaust system. Special application for Screamin Eagle 44mm CV carburetor.

41068

# CV Accessories



## CV Carb Rebuild Kit

Kit includes seals, o-rings, diaphragm and vacuum piston. Fits FXST, FLST 90-on, FXR 90-94, FLT 90-06 and XL 88-06.

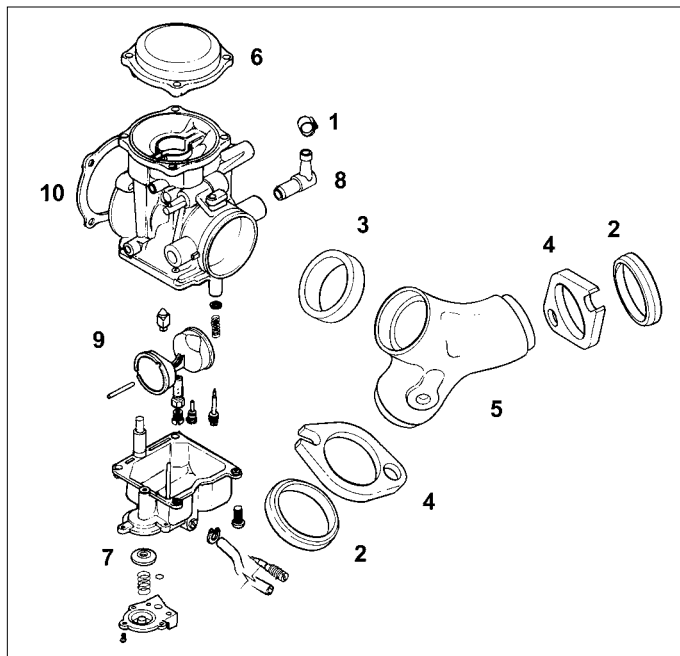
**41008**



## CV Carb Upgrade Kit

Includes rebuild kit, vacuum piston, screws and tuner kit. Fits 88-06 Keihin CV carbs.

**41010**



## CV Carb Parts FLT, FXR, FXST, Dyna

#	PCP	Description
1	16222	Gas line clamp (10014) (10 pack)
2	14030	Seal, intake manifold to head (26995-86A) (5)
3	14102	Seal ring, carb to manifold 89-06 (27002-89)
4	41002	Flanges, front and rear (plain) (27009-86A, 27010-86A)
	41003	As above, chrome
5	41032	Manifold, plain Evo 90-99 (27019-89)
6	21512	Top, chrome cover 90-99 and 99-2006 TC (27040-88)
7	41019	Diaphragm, accelerator pump 79-88 (27361-76)
	79118	James, as above
8	16058	Fitting BT 81-06, XL 88-03 (27371-76)
9	29164	Float 92-on (27576-92)
10	79190	James gasket 88-on (29059-88) (10 pk)
	25186	Preston as above
	79519	Gasket, injector type 95-on (29095-95) (10pk)
	79546	Gasket, 95-on (29062-95B) (10 pk)

## Extended Float Bowl Kit

Fits CV carbs for extra capacity and includes Hi-Flow inlet fitting. For Softail 90-on, FLT 93-06, FXD 93-17, FXR 90-94

**59729**



## Chrome Choke Cable

### Mount 93-99

Replaces 69126-92 on 93-99 FLT-FXST/D models.

**27320**



## CV Adjustable Choke Cable Eliminator

Brass CV adjustable choke cable eliminator comes complete with plunger and spring for CV Keihin carbs. Easy to install on FLST, FXST, FXD 93-on and XL 88-on models.

**73755**

## S&S CV Carburetor Jet Kits

PCP	Application
115201	XL 883, 1200 04-on
115202	BT 90-98
115203	BT 99-on



## CV Carb Master Rebuild Kit

For 88-on models with CV carburetors. Fits XL 88-on, FX 93-on & FL 93-on.

**41040**



# CV Accessories

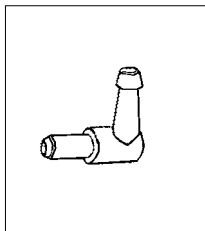


## Dynojet

Dynojet carb recalibration kit for stock carbs will work with mild cams, stock or aftermarket exhaust and stock or aftermarket air cleaner.

### PCP Description

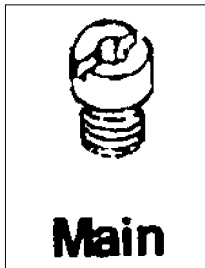
<b>41012</b>	XL 883-1200, 1340 40mm 89-95 with Accel pump
<b>41014</b>	XL 96-03, BT 96-00 with Accel pump
<b>41015</b>	.001 BT Evo 90-99 Thunder Slide kit w/Accel pump
<b>41023</b>	Twin Cam 88 99
<b>41024</b>	Twin Cam 88 99 Thunder Slide kit
<b>41025</b>	Twin Cam 88 00-06
<b>41026</b>	Twin Cam 88 00-06 Thunder Slide kit



## Keihin Carb Fuel Inlet Fitting

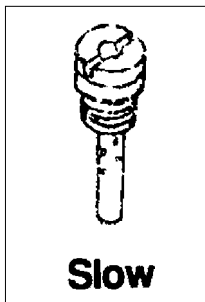
Stock replacement fuel inlet fitting presses into carb body. Sold Each.

<b>16057</b>	XL 83-87 (27594-76)
<b>16058</b>	BT 81-05, XL 88-03 (27371-76A)
<b>16120</b>	BT 81-05, XL 88-03 (27371-76)



## CV Main Jets (5 pack)

PCP	Size (mm)
<b>16068</b>	1.60 (27152-89)
<b>16069</b>	1.65 (27116-88)
<b>16070</b>	1.7 (27115-88)
<b>16071</b>	1.75 (27090-89)
<b>16072</b>	1.80
<b>16073</b>	1.85 (27185-90)
<b>16074</b>	1.90
<b>16075</b>	2.00



## CV Slow Jets (5 pack)

PCP	Size (mm)
<b>16076</b>	.040 (27281-92)
<b>16077</b>	.042 (27171-89)
<b>16078</b>	.044
<b>16079</b>	.045 (27170-89)
<b>16080</b>	.046
<b>16081</b>	.048 (27165-90)

## CV Choke Cable Bracket

Will mount the knob assembly on top of carb for use with all air cleaners.

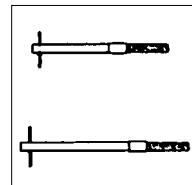
**73733**



## Kinetic-Karb CV Tuner Kit 89-98

Tuner kit fits 89-98 Keihin constant velocity carbs, permitting easy tuning of custom air cleaners, cams and exhaust. Kit includes instructions.

**41021** FLT, FXST-FLST 89-98, FXR 90-94, FXD 91-98



## Keihin and CV Idle Screw

Screw provides easier hand adjustments. Fits FLT 79-89, FXR 82-89, Softail 84-17, FXD 91-17 & XL 76-on.

**26108**

## Chrome CV Carb Top

Fits XL 88-06, all BT Evo 90-00 and Twin Cam 99-06 with CV carbs.

### PCP Type

**21512** Smooth (27040-88)



## Carb Related

Carb plate o-ring BT 00-on replaces 11292.

**14596**



## 40mm CV Vacuum Piston

- Fits XL 88-06, FXR 90-94, FLT 90-06 & FLST, FXST 90-17
- Replaces 27585-88

• No warranty on rubber diaphragm

**41036**

# Keihin



## Carb Rebuild Kit for Keihin CV

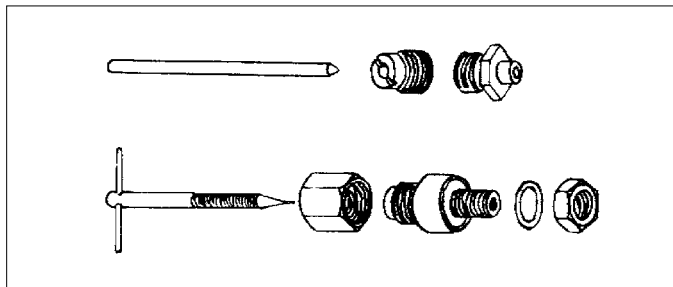
Rebuild kit for all Big Twins and XL models using a CV carb. Includes all the necessary needles, O-rings etc... for a complete rebuild. Fits XL 88-06 and Big Twins 90-06.

**23505** Rebuild kit for all CV carbs

**79824** James Keihin, CV carb rebuild kit 1988-06 27006-88

**14574** Carb bowl O-ring 88-91 (27577-88) (10 pack)

**14575** Carb bowl O-ring 92-on (27577-92) (10 pack)



## Keihin Adjustable Main Jet

Full adjustability for maximum tuning efficiency. As pictured.  
**16098**

## "CV" Manifold "O" Ring Kit

Includes 2 of 26996-86A & 1 of 27002-89

**14200** 3 piece kit



## Intake Manifold Flanges for Evolution® Models

These intake manifold flanges will replace the stock parts on Evolution® Sportster® models 86-95 and Evolution® Big Twins from 90-95. They may also be used on RevTech™, HES Performance and S&S manifolds for Evolution® models.

**PCP** **Description**

**41002** Plain flanges (27009-86A, 27010-86A)

**41003** Chrome flanges

**14030** Seals (26995-86A) (5 pack)



## Keihin Carburetor Viton Rebuild Kit

**PCP** **Year**

**41067** FL, FX 79-84, FXR 82-88, Softail 84-88, XL 79-88



## CV Carburetor Rebuild Kit

**PCP** **Year (27006-88)**

**41020** FXD, FXST, FLST 90-17, FXR 90-94, XL 88-on



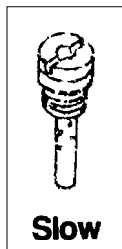
## Adjustable Main Jet for Keihin Carb

Eliminates the chore of "hit and miss" multiple jet changes when changing pipes or air cleaners on all Keihin equipped Harley-Davidson models 1976-on. Full adjustability allows precise tuning for maximum performance with every combination of engine, pipes and air cleaner. This kit frees you from the limitation of the few fixed jet sizes available and the labor of drilling jets. Use new gaskets and seals when installing, supplied in our rebuild kit. Our installation tool correctly marks the float bowl for proper fit.

- 3820** Complete kit (shown)
- 5784** Adjustable needle only (includes 180mm jet)
- 3825** Installation tool only

## Keihin Low Speed Jets 76-89 (not CV)

PCP	Size (mm) (each)
<b>16060</b>	.065 (27896-79)
<b>16061</b>	.068 (27894-78)
<b>16063</b>	.072 (27897-78)
<b>16064</b>	.075 (27382-77)
<b>16066</b>	.088 (27348-77)
<b>16067</b>	.100



## Keihin Main Jets for Harleys

Preston now provides Keihin main jets in four needed sizes for 76-on Harleys.

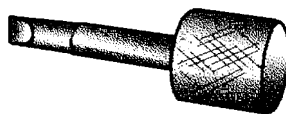
PCP	Size (mm) (each)
<b>3821</b>	1.65 (27419-76)
<b>3824</b>	1.70 (27418-76)
<b>3826</b>	1.75 (27417-76)
<b>3828</b>	1.80 (27416-76)



## Slow Jet Screw Driver

Facilitates removal of Keihin slow jets without damaging jet.

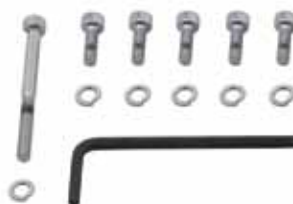
**26135**



## Thunder Jet Accelerator Jet & Accessories

Mounts in all Bendix-Keihin, S&S, Flowmaster, Tillotson and CV carbs; choke must be deleted for use. Works on Venturi vacuum principle as a third jet. Extra jets included.

- 16273** Thunder Jet Bendix Keihin, S&S E series
- 16274** Replacement fuel tube
- 16276** Thunder jet for CV carb
- 16279** Jet tool, all



## Float Bowl Screws for Keihin Carburetors

If you change Keihin jets, this kit should be bolted on. Includes an allen wrench, and has a flat black finish. Fits all Keihin.

- 4747** Socket screw set 76-89 (not CV carbs)
- 24064** Socket screw set FXR 90-94, Softail 90-on, FLT 93-06, FXD 93-17, XL 88-on.(CV carbs)



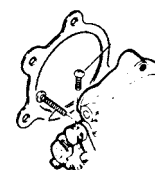
## High-Flow Accelerator Pump Kit for Keihin Carburetors (not for CV) 80-88

This kit improves the performance of stock Keihin carbs. Fits Big Twin 80-88, Sportster® 80-87. Bolt on extra power by simply removing the float bowl, drilling one small hole in it, and installing this high performance accelerator pump body. Low and mid-range throttle response are noticeably increased. Matte finish.

- 269050** Accelerator pump kit

## Air Cleaner Mount Gaskets

PCP	Years
<b>25096</b>	77-87 (10 pack) (29058-77)
<b>25186</b>	88-on CV type (10 pack) (29059-88)





# Carburetor Accessories



## Deluxe Keihin Carb Kit

Fits BT 76-89 and XL 76-87 all models. Does not fit CV.

**844** Complete Kit

**79823** James

**41019** Preston diaphragm pump only 79-88

**29028** T/L Fuel valve w/clip only (27886-78A)



## Vacuum Switch Assembly

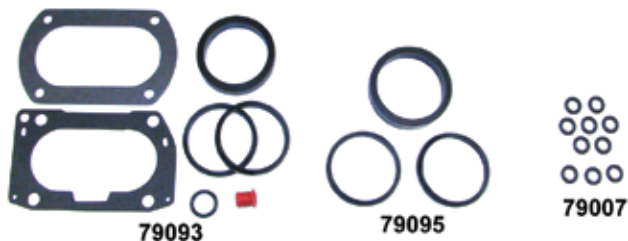
**PCP Description**

**66408** FXR 84-90 (26557-83)

**66409** All XL 86-93, FXST 84-90 (26558-84)

**66404** FLT 85-89 (26555-84)

**66411** All FXST, Dyna, FXR 91-95 (26566-91)



## James Twin Cam Carburetor Gaskets

For TC 99-on 1450cc and 1550cc engines.

**PCP Description**

**79093** Intake manifold carb seal kit

**79007** Upper fuel injector o-ring (10pk)

**79008** Centre fuel injector o-ring (10pk)

**79095** 44mm CV Intake manifold carb seal kit  
45mm Mikuni



## Keihin Carburetor Rebuild Kit

**PCP Fits**

**835** 76-86 Keihin (not Flowmaster or CV) (27006-76)

**14542** Float bowl orings BT 84-89, XL 83-87 (27324-83) (10)



## Accelerator-Idle Adjusting Screws

"T" handle design allows for easy adjustment of the idle and accelerator pump. Use the long screw for the idle and the short screw for the accelerator pump on S&S G carbs. A single idle screw is available for Bendix, Keihin/CV models.

**PCP Description**

**26101** S&S G

**26107** Bendix

**26108** Keihin & CV



## Colony Polished Chrome Intake Manifold Mounting Kit

**9930** BT L82-89

**9931** BT 90-94, XL 88-94

**9932** BT 95-on, XL 95-on

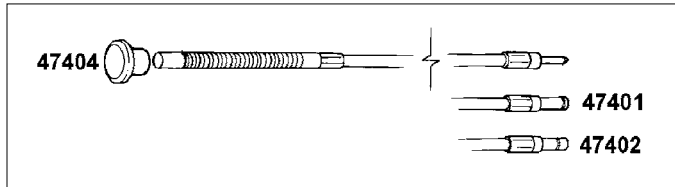


## Compliance Fittings

Replacement compliance fittings with extra-thick flanges to eliminate leakage at the head surface. Fit Big Twin 84-99.

**1326** 27008-83A, 27012-83A

# Carburetor Accessories

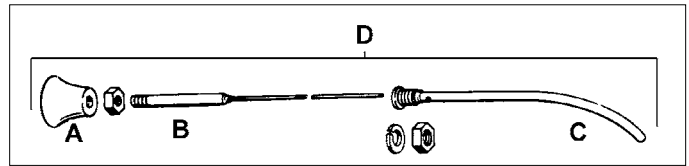


## Choke Cable FLH, FXST, FLT

Cable assemblies include knob, casing, and inner wire.

### PCP Description

- 47401** FXST 84-85, FXWG 85-86 (29213-79)  
**47402** FXST 86-89 (29211-86)  
**20015** FLT, FXST 93-06, FXD 91-05, FXR 93-94 not FI (29229-88C)  
**47404** Chrome knob FXST 84-89 (29214-71)  
**12594** Nut FLH, FXST 84-89 (27450-82) (each)  
**11013** Retaining ring FXST, FLT 79-89 (11019) (10 pk)



## Choke Cable XL, FXR

### PCP Description

- 20014** (D)FLT, FXST FXR 90-92 (29236-90)

## Air Cleaner Screws

1/4 x 20 S&S Style screws.

- 9980** (3pk)



## Complete Choke Cable Assembly

Includes cable, cable guide, sealing cap, starter valve, starter cap and enrichment spring.

- 21812** BT 93-06 (29229-88C/D)  
**21985** XLH 883 Hugger, 1200 92-03, XL 1200C/S 96-03, XL 883R 02-03 (29238-92/A)



## Complete Choke Cable Assembly BT 93-06

Includes knob, casing, inner wire and CV carb top mount bracket to relocate the choke assembly cable.

- 21112** BT 93-06, FXD 91-06 & XL 88-on (29229-88D)



## Quick Change Float Bowl Screws

For S&S Super B to facilitate jet changes by easy bowl removal. Includes 4 knurled screws with large slots in satin finish.

- 41001**



## XL Intake Manifold 2004-06

Intake manifold for spigot mount carburetor. Fits XL 04-06.

- 41061** 27024-04



## Intake Manifold Conversion Kit

Converts stock rubber compliance fittings to a more rigid mount system. Includes flange set and seals. This system may alter the fit of the stock carb and air cleaner assembly. Shimming or a slight change in bracketing may be required. Fits FXR 84-94, FLT, FXST 84-99, FLST 86-99 and FXD 91-99.

- 41063**

## Cable Blocks

Attaches inner cable to carburetor.

Includes screw and cotter key. Replaces OEM 27450-36, 27719-67 and 27716-67.

- 1503** Sold Each



## Sifton Idle Speed Knob for HSR 42/45

- 73535**

# Manifolds & Adaptors



## Stock Intake Manifolds

Cast alloy. Spigot type.

**PCP Application**  
**41032** Evo 1340 90-on  
 (27019-89A)



2090



2091

## Carb Manifold Adaptors

Fit with our #1303 Manifolds.

**2090** 36mm to 38mm stepped manifold adaptor

**2091** 40-44mm straight through manifold adaptor



## Stock Intake Manifolds

Are cast alloy as original to fit TC88 99-on.

**41034** 27613-99



## CV Carb Adapter

Adapts the HSR-42 Mikuni or CV carb to a 2-bolt manifold.

**41007** 2 Bolt early style



3273

3280

## Manifold Spacer 71-89

Includes 2 gaskets.

**2471** Manifold spacer 3/8"  
 (29250-78)



## Manifold Repair Rings

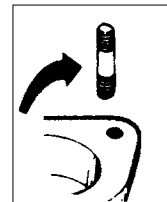
Adapter rings for repairing the lips on the head and intake manifold. They may also be used in customizing, to adapt early-type manifolds to late-type heads and vice-versa. The stroker rings can turn a stock manifold into a stroker manifold for .200" taller cylinders or stroker plates. Adapter and stroker rings are available in pairs.

**3273** Adaptor rings

**3280** Stroker rings

## Carb Mount Studs

**PCP Size Application**  
**10876** 5/16 x 1-1/4 78-89 (29254-78)



1968



1969

## Rubber Flange Adapters (not for HS40's)

**1968** 36-38mm

**1969** 40-44mm

## James Intake Manifold Seal

**79510** 86-09 (26995-97-X)



14034



14102



14030



14400

## Intake Manifold O-Rings & Seals

**PCP Description**

**14034** L78-84 Flat seal (27062-78) (10 pk)

**14400** L78-84 Flat seal, red silicone (10 pk)

**14030** 883-1200 86-on (26995-86A) (5 pk)

**14102** BT-XL 89-on (27002-89) (each)



14400



# Air Cleaner Insert



**T/L Chrome Billet Air Cleaner Insert 94-99**  
63003 29065-94



**Black Ball Milled Air Cleaner Cover**  
For use with K&N replacement or velocity type tapered air filter.  
45092



**Air Cleaner Insert with Black Skull**  
Chrome screw-on air cleaner insert with raised black modern skull design. Sold each.  

PCP	A/C	Application
45293	7"	FLST-FXD-FXST 99-on, FLT 99-16
45294	8"	FXR 84-94, Softail 84-99, FLT 84-16



45130



45131

## Air Cleaner Inserts

Round inserts fit the recessed are of round center screw type units.

### PCP Description

45130 7" Chrome (29400-90T)

45131 8" Evo chrome (29289-89T)



## Chrome Oval Air Cleaner Insert 00-06

45369 Smooth insert



## Skull Air Cleaner Cover Insert

Raised chrome modern skull on a black cover insert. Fits FXD 99-07, FLT 99-13, FLST & FXST 00-on.

45289



## Air Flow Black Air Cleaner Insert

PCP Application

21064 FLT 99-13, FXD 99-07, Softail 99-15

# Air Cleaners



## V-Charger Chrome Air Cleaner and Filter

Chrome cleaner includes filter for CV models 90-92, XL 88-on, FXD 91-on.

**PCP Style**  
**21798 Flame**



## V-Charger Chrome Air Cleaner

Chrome cleaner features air scoop with built-in chrome screen and filter. Kits include brackets and/or breather kits as required.

PCP	Application
59034	CV 00-on
59723	S&S BT 92-99
59037	Keihin BT 84-89
59038	CV XL 91-on
59039	CV XL 88-90



## New Era Air Cleaners Assembly Kit

Kit includes complete chrome air cleaner, mounting bracket, and breather kit.

**45353** BT 93-99  
**45354** XL 91-on



## S&S Aircleaner Cover

Screws, chrome plated.  
**9980** Set of 3



## Billet Scoop Air Cleaner

Includes filter and mount brackets. Fits BT 93-99 with carburetor.

**PCP Style**  
**59725** Smooth



## Chrome Flame Tear Drop Air Cleaner Kits

Kit includes a chrome air cleaner assembly, chrome mount bracket, breather kit with a black hose and a breather unit.

**PCP Application**  
**59031** BT 92-99  
**59032** TC88 00-07



## Tear Drop Air Cleaner Assembly

Tear drop style die cast air cleaner assembly. Fits all the Bolt Carbs, Keihin, (not CV), Tillotson, & S&S units (not E or G).  
**1229** Air cleaner, complete (29205-87T)

# Air Cleaners



## 8" EVO Type Air Cleaners

Includes chrome cover, foam element and backing plate. Order brackets separately.

### PCP Description

- |              |   |
|--------------|---|
| <b>45325</b> | Keihin  |
| <b>45326</b> | CV FLT, FXST, FLST 90-on, FXR 89-94, FXD 91-17 and XL 88-on |
| <b>6670</b>  | Foam element  |



## Velo High Flow Air Cleaner Backing Plate Kit

Sifton kit includes chrome one piece alloy backing plate, washable element, accepts 8" round covers with 52" of surface measuring 7" x 2-3/4" deep, stainless steel breather kit with fittings and chrome breather and necessary hardware to mount BT 93-07 & FXR 92-94. Cover not included.

**59407**



## Round Air Cleaner Backing Plates

Accepts 7" or 8" round air cleaners with center screws.

### PCP Application

- |              |  |
|--------------|--|
| <b>45593</b> | FLT 08-16 with 50mm EFI                                  |
| <b>45594</b> | FLT 90-07 with CV, Softail 90-on, FXR 90-94 and XL 88-on |



## Chrome S&S Air Cleaner Kits for Stock Carbs

**170105** Buell, CV 94-02



# Air Cleaners



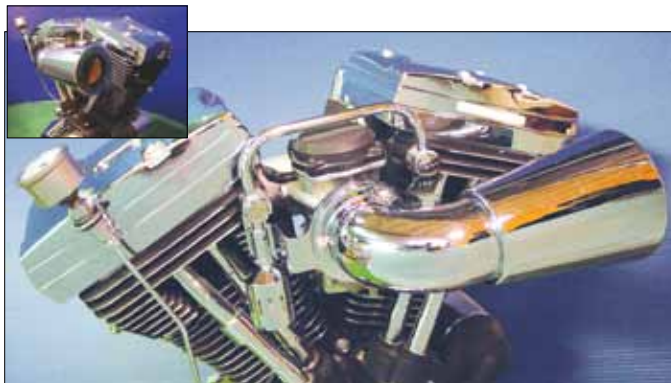
## CV Air Cleaner Breather and Bracket BT 93-07

Includes billet bracket with breather bolts and tapered filter element with chrome 90 degree intake tube to face forward on CV carbs. To face forward or upward on S&S models, order adaptor plate PCP# 41038 for use with PCP# 59417 spike cleaner.

PCP	Item	Style
59417	Spike	Forward (not FLT EFI 95-01)
59465	Funnel	Forward (not FLT EFI 95-01)
41006	S&S	Forward adapter
41038	CV	Vertical adapter
59467	Spike filter only	
21698	Funnel filter only	

## Air Cleaner Bracket Only

59720	Spike BT 84-99
59721	Funnel FXST 93-15, FLT 93-07



## Adapter Plate

Will rotate #59417 or #59465 air cleaners to a vertical position on CV carbs.

41038



## Adapter Plate

Allows installation of CV air cleaner to S&S Super E carbs and horizontal or vertical mounting of #59417 or #59465 air cleaners.

41006



## Panzer Air Cone for S&S E Carbs

Fits S&S E carbs and is fully rotational when used with the Sift-on integral breather bracket #21866, sold separately. #21080 can also be installed on CV carbs when using #59466 adaptor.

PCP	Item	Type
21080	Air Cone	Slots
21866	Bracket	



## CV Air Cleaner Cone Systems

Features cone and integral breather mount bracket for forward mounting.

PCP	Carb	Type
21883	CV	Integral, Softail 93-15, FLT 93-07 FXD 93-06, FXR 93-94



# Air Cleaners



## Velo-dome Velocity Stack

Domed velocity stack fits Super E models.

PCP	Item
21757	Stack with cover
59478	Bracket kit



## Velo Dish Air Cleaners

Features chrome dish and full flow filter with integral backing plate and hardware. Fits 93-15 FXST carb or EFI 93-15 and FLT 93-07, FXD 93-06, FXR 93-94.

Cleaner	Size	Filter
59961	6"	77777



## Screaming Skull Air Cleaner

Fits FXST, FLST, FXD, FLT 93-99 and FXR 93-94.

59271



## Air Cleaner XL 88-on

Air cleaner is visible through clear plastic insert in cover.

59380



## Siren Air Cleaner Assemblies

Includes cover, backing plate and mount hardware for BT 92-on.

PCP	Year
59163	BT 92-99, FXR 92-94
59164	00-up



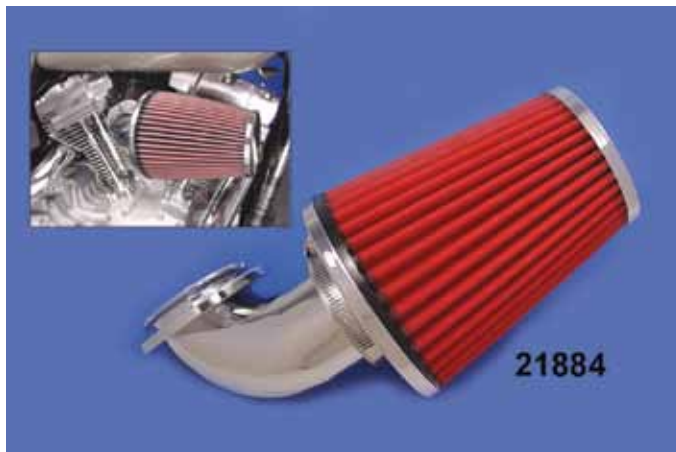
# Air Cleaners



## Chrome Teardrop Twin Cam Air Cleaner Kit

Includes die cast backing plate, filter, teardrop chrome cover, breather, canister set and bolts for 99-07.

**59256** CV models

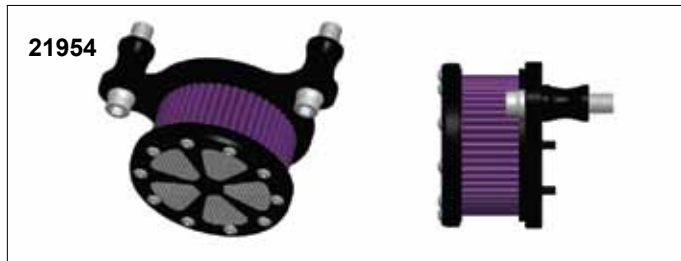


## Cycovator Forward Mount Air Cleaner

Fits Softail-FXD 93-07, FXR 93-94, XL 91-on, FLT 93-07 (except 95-01 EFI)

**PCP** **Item**

**21884** Kit with "Taper" style cleaner



**21954**



**Spoke**

**Skull**

**Flame**

## Air Cleaner Kits

Includes backing plate and hardware to connect breather fittings in head.

Black	Chrome	Style	Fitment
<b>21954</b>	<b>21960</b>	Spoke	FLT 08-16 EFI with 50mm injector
	<b>21961</b>	Skull	
<b>21956</b>	<b>21962</b>	Flame	Softail 01-15 FLT 00-07 FXD 00-17
<b>21963</b>		Spoke	
<b>21957</b>	<b>21964</b>	Skull	
<b>21959</b>	<b>21965</b>	Flame	



**59136**

## Sifton Air Cleaner Kits

Includes a hi-flow "Cycovator" element with an integral metal backing plate for a direct bolt on application for carburetor and electronic fuel injected models. Reuse of some original hardware required.

**PCP** **Item**

**59132** Touring 08-16

**59136** BT 93-07 CV-Delphi EFI



## Air Cleaner and Backing Plate

Includes air cleaner with washable element and backing plate. Hardware and 8" stock style air cleaner cover not included. Fits FXD 99-07, FXST, FLST 99-15, FLT 02-07.

**45345** 29773-02C



# Air Cleaners



**Arlen Ness Big Sucker Air Cleaner Assembly**  
Bolts on to XL 91-on models and includes breather bolts.  
**59820**



**Chrome Oval Mesh Air Cleaner**  
Chrome oval CV mesh air cleaner includes element. Fits FXR 90-94, FLST, FXST 90-15, FLT 90-07, & XL 88-06  
**21947**



**Namz Oxygen Enrichment Device**  
Recommended for bikes with high flow air cleaners and performance exhaust systems. Reduce engine operating temperature between 20-30°. Just simply plug this in between oxygen sensor and wiring harness. Pair.

**PCP Application**

- 17305** FLT 07-08, 07-11 FLST, FXST 07-11 models with Stage 1 kit installed. Works with stock ECM.
- 17306** 10-on FLT 10-on, FLST, FXST 12-on models with Stage 1 or Stage 2 kit installed. Works with stock ECM.
- 17307** XL 07-on



**Velo High Flow Air Cleaner Backing Plate Kit**

Kit includes a one piece alloy backing plate, a washable tapered element, stainless steel breather kit with fittings and chrome breather filter and necessary hardware to mount BT Evo and TC88 models. Cover not included.

**59030** Carb model

**59406** EFI FLH, FLHT 93-07 Arlen Ness Big Sucker



**Sifton Air Power**

Includes die cast backing plate, filter and breather canisters. Fits FXST, FLST, FXD, FLT 93-07 and FXR 92-94 with CV or EFI with Delphi. Order cover separately as listed below. Breather bolts also available separately.

**59221** Air cleaner kit

**73584** 92-99 Bolt set

**73585** 00-on Bolt set



**Paughco Early Style Chrome Carb Breather Snoot**

- Bendix Keihin style with 3 bolt pattern
- Filter not included

**75077**

# Air Cleaners



59463



59463



59463



59466

## Chrome Billet Carburetor Bracket Kits

- Features integral breather passage to air intake
- Includes (2) 3/8" x 16 and 1/2" x 13 breather bolts & hardware.
- FXST, FLST 93-15, FXD 93-on & FLT 93-07 with carb or EFI

PCP	Compatible Carburetor	Compatible Air Cleaner
59466	CV Carb or EFI	CV, S&S Super E, Velocity stack
59463	CV Carb or EFI	CV, Velocity stack
21866	S&S Super E, Super G	CV, S&S, Velocity stack
59464	S&S Super E	CV
59468	S&S Super E	S&S



## Carb Mount Bracket with Integral Breather

Billet chrome integral breather/carburetor mount bracket includes mount bolts with 1/2x20 thread, for installation of any 3-bolt CV air cleaner assembly. Fits XL 1991-on.

27031



59719

## Mikuni Air Cleaner Adaptor Plate 42 & 45mm

Will adapt any CV style, 3-bolt air cleaner to the Mikuni or CV Keihin as noted.

**PCP Application**  
**41006** CV to S&S E and G  
**59718** 38mm CV to Keihin  
**59719** 38mm Mikuni



41006



## Billet Carb Support

For S&S super E installations. Order banjo bolts and brackets separately for Evo or TC. Bracket is only drilled for S&S style carb. There are no holes for CV air cleaner.

59478



27341



27342

## Air Cleaner Adapter

**PCP Application**  
**27341** FLHT, FLTR 08-14, FLHX/R 08-15  
**27342** EFI 01-15



## Air Cleaner Mount Kit for 50mm EFI

Forged aluminum bracket with internal breather and related components to mount 8" air cleaner to the backing plate. Fits TC FLT 08-16 models with 50mm EFI unit.

21033

# Air Cleaners



## Billet Air Cleaner Mount Set

Will mount air cleaners with flat backing plates to EV and TC-88 models. Offset billet mounts feature built-in breather passage that feeds inside air cleaner housing. Brackets can be rotated to proper position, then by drilling the back plate. Threaded breather nipples will fasten back plate to brackets.

### PCP Application

**73655** BT 91-99 Evo & XL 91-on

**73656** TC 00-on & FLT 00-16



## Chrome Billet Air Cleaner BT 90-on & XL 88-on

Mount kits sold separately.

PCP	Style	Carb
<b>59822</b>	Diamond	CV
<b>21665</b>	Skull	CV
<b>21666</b>	Diamond	S&S



## Chrome Maltese Cross Carb Cover

Includes backing plate without filter. Available as kit or carb cover and backing plate only. Kits include brackets and or breather kits as required to fit stock original carb. Centre portion of cross has a matte chrome finish.

### PCP Application

**59421** BT 93-99

### Air Cleaner Cover only

**PCP Fits**

**59427** S&S Super E





# Air Cleaners



6831



6832



59214



59215

## 883-1200 & BT CV 90-on Air Cleaner

Chrome die cast tear drop design with backing plate to fit the constant velocity carbs on XL 88-on and BT 90-on. Includes element.

- 6831** Smooth tear drop
- 6832** "Live To Ride" chromed (29286-88T)
- 45240** "Live To Ride" gold inlay

### Bracket for CV to custom air cleaner

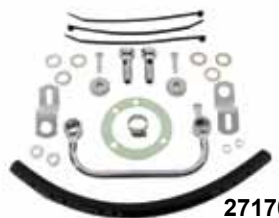
- 27170** BT 93-98 (not FXD)
- 4374** BT 85-90

## Round Chrome Screen Air Cleaner

- 5" O.D. Smooth chrome air cleaner with chrome mesh
- 3 Bolt flange and vent fitting
- Fits Bendix and Keihin carbs

### PCP Screen Width

- 59214** 1" screen
- 59215** 1.5" screen



27170



4374

### Bracket for CV to Custom Air Cleaner

- | PCP          | Fit      |
|--------------|----------|
| <b>27170</b> | BT 93-98 |
| <b>4374</b>  | BT 85-90 |

6590



6591



45112



6592



## Replacement Parts for Tear Drop Air Cleaners

- | PCP          | Description                 |
|--------------|-----------------------------|
| <b>45277</b> | Polished cover              |
| <b>45279</b> | Chrome cover                |
| <b>45233</b> | Bendix-Keihin backing plate |
| <b>45234</b> | CV backing plate            |
| <b>9980</b>  | Chrome screw set (3 pack)   |
| <b>6670</b>  | Uni-filter element          |

## Round Air Cleaner

- Smooth chrome air cleaner with chrome mesh
- Includes element & backing plate for Bendix carburetor
- Fits FL, FX 72-84, XL 72-87, FLT 79-89, FXR 82-89 & FXST 84-89

**21027**



# Air Cleaners



## Crankcase Breather Assembly

Mount your breather in plain view instead of hiding it behind your engine or transmission case. Comes complete with a one-piece filter molded to a light weight chrome end cap, a chrome zinc die-cast mounting base with 5/16" inlet and a hose clamp. The hose clamp holds the filter to the base when the vent hose is installed.

- 77101** Complete assembly  
**4634** Replacement filter ONLY (no chrome)  
 2" diameter x 1/2" height



## Round Air Cleaner with Black Cover

Air cleaner includes CV backing plate, filter element, black cover and screw. Fits FL, FX 93-on and XL 88-on.

- | PCP          | Size | Style                     |
|--------------|------|---------------------------|
| <b>45335</b> | 7"   | Chrome button screw       |
| <b>45232</b> | 7"   | Chrome skull center screw |



## 7" Nostalgic Style Air Cleaner

Air cleaner with centre screw available with cover to fit Bendix, Tillotson, Keihin and CV carbs. Includes breather tube, backing plate and element. Approximately 3" thick.

- | PCP          | Description                                   |
|--------------|---|
| <b>45340</b> | CV BT 90-92, FXD 91-92                        |
| <b>45342</b> | CV FXST 90-15, FLT 90-97, FXD 91-17, XL 88-06 |
| <b>45343</b> | Smooth air cleaner cover only FLT 79-89       |
| <b>45344</b> | V-Logo air cleaner cover only FLT 79-89       |
| <b>6670</b>  | Foam element                                  |



## Bracket Kit for Flow Swept Air Cleaner

Fits EV and TC 93-on models.

- 59949** Bracket kit  
**77777** Filter only



## Black Air Cleaner Breather Kits

- | PCP          | Application          |
|--------------|----------------------|
| <b>21110</b> | FLT 93-17 (29310-93) |
| <b>21111</b> | XL 91-17 (29281-91)  |

## Air Cleaner Rubber Tube Inserts

- Fits FLT, Softail & FXD 05-on.  
 Set of 2. Replaces 29557-05.  
**23114**



## 8" Chrome Nostalgic Air Cleaner

Air cleaner is available for BT 90-99 as a complete assembly or as a replacement cover only for stock backing plate. Cover features an embossed design and centre screw mounting.

- 45010** CV BT 90-99, XL 88-on

## Air Cleaner Covers Only

- | PCP          | Carb | Description         |
|--------------|------|---------------------|
| <b>45249</b> | CV   | Cover only BT 90-99 |

Note: For 93-on models order breather kit #27170, and for pre-93 models use bracket #4374

# Air Cleaners



## Black Billet Aluminum Air Cleaner

Air cleaner for EFI and carb models. Black with chrome highlights. Fits FXD, FLST, FXST 08-on for use with 50mm injector on EFI units.

PCP	Design
59211	Torque
59213	Luxe spoke



## Skull Air Cleaner Kit

Skull air cleaner for CV carbs. Order carb support bracket separately. Softail 90-15, FXR 90-94, FXD 91-on, FLT 90-07, and XL 88-06

PCP	Application
45367	Black with chrome accents



## Chrome Skull Mesh Air Cleaner Kit

Air cleaner kit features chrome cover with black mesh skull.

PCP	Application
59188	FLT, FLST, FXD, FXST 93-07
59189	FLT 08-16



## Bobbed Style Round Air Cleaner Cover

Air cleaner cover offers increased air flow.

PCP	Size	Application	Finish
59242	7"	FLST 10-17, FXST 12-17, XL 1200V 12-on	Chrome
59243	7"	FLST 10-17, FXST 12-17, XL 1200V 12-on	Black
21921	8"	FXST 10-on, FLST 12-on XL 1200V 2012	Black



## S&S Air Cleaner Adaptor Kit

Allows installation of air cleaner assemblies on late model bikes equipped with S&S Super E and G carbs. Kits include support bracket, CNC billet adaptor with breather, gaskets and mounting hardware.

41059



# Air Cleaners



27024



27023



59720

## Chrome Air Cleaner Brackets, for Evolution

Mounts to boss on engine heads to support custom air cleaners.

PCP	Model	Years
27022	1340cc (inlet 2")	84-89 (mount holes 6" c/c)
27024	1340cc (inlet 2-1/4")	90-91 CV (as above)
59720	FXR, FXST	84-89 with choke bracket
59721		93-15 (for use w/breather kit)
27023	883-1100-1200XL	85-87 (mount holes 5" c/c)
27025	883-1100-1200XL	88-90 CV (as above)

Note: These support brackets will not work with #45336 series round air cleaners or #6591 air cleaners



## Chrome Air Cleaner Support Brackets

For installing custom round or teardrop air cleaners on BT 84-92 and XL 85-90.

4374 29208-87T

## Air Cleaner Mount Gaskets (10 pack)

James	PCP	Description
	25096	77-89 (29058-77)
79190	25186	88-on CV type (29059-88)
79519	-	95-on Injector type (10 pk)
79546	-	95-on Carb (29062-95B)



## Carb Vent Fitting

1/8" Chrome, steel nipple for air cleaner backing plates. Sold in 5 packs.

PCP	Hose	Angle
10502	5/16"	90 degree



## TC Breather Bolts

Zinc breather bolts are 3/8" x 16 thread. Fits FXST and FLST 08-on. Replaces 29465-08. Pair.

24006



27170

## 93-on EVO BT Breather Kit

For custom air cleaners to motors with the internal breathing system.

PCP	Description
27172	BT 93-99 w/round cleaner, FXR 93-94 (29310-93)
27170	BT 92-98 w/teardrop (not FXD) (29283-92T)
16534	Banjo bolts only Evo 92-99 (pair)
16538	Banjo bolts only BT 92-07 (pair)



## Extended Breather Bolts

Allows the mounting of air cleaner to breather bolt stand.

PCP	Application
73657	TC 99-on
73658	Evo, XL 92-on

# Carb Breathers



## Sifton Vent Cannister

Includes line and clamps.

**59160**



## Sifton Braided Hose Crankcase Breather Kit

Kit features a 3/8" I.D. braided stainless steel hose, breather filter with mounting stud, and hardware. Air cleaner and carb support bracket must be purchased separately. Fits BT 93-01 custom applications only.

### PCP Description

<b>77421</b>	Kit
<b>77105</b>	Breather
<b>73500</b>	Bolt kit

## Sifton Dual Vent Kit

Includes 2 vent cannisters, fittings and banjo bolts for Evo and TC88 models.

**59159**



## Chrome Billet Crankcase Breather

Features 1/8" NPT fittings.

**77106**



## Breather Bolt and Banjo Kit BT

Includes bolts for BT 93-02, XL 91-02 applications and 2 banjo bolts to accept 5/16" hose.

### PCP Description

<b>73501</b>	Without tee
<b>73502</b>	With tee
<b>73503</b>	Evo nylon washers
<b>73504</b>	TC88 nylon washers



## Sifton Breather Canister

Features enclosed breather filter and tube for attaching to breather cross over lines, which is held in place by set screws. Bottom cover is removable for cleaning.

### PCP Description

<b>59195</b>	Canister
<b>59196</b>	Breather tube kit
<b>59197</b>	Tube only



## Yost Pro Mod Breather Kits

Designed to be modular, this kit allows for a custom look with an extra 2 ponies. Kits can be used with an air filter and stock cover, or without an air filter by using the screen provided. Machined from solid 6061 T6 billet aluminum with an unique internal breather design (no more hoses). Includes installation hardware.

### PCP Item

<b>21767</b>	Kit TC 99-on TC & Delphi FI 02-on
<b>21768</b>	Kit Evo BT 93-99

# Carb Breathers



## Sifton Dual Breather Kit

Includes 2 canisters, banjo tubes and bolts for Evo and TC88 applications.  
**59158**



## Sifton Dual Breather Kit

Kit includes 2 breathers with chrome ends and banjo tubes with hardware for FLT 92-16 (except 95-01 EFI), FXR 92-94, Softail-FXD 92-17 & XL 91-on.  
**59228**



## Sifton Chrome Dual Canister Breather Kit

Fits Evo and Twin Cam models.  
**59244**



## Chrome Billet Canister Set

Includes bolts for Evo and TC88 applications.  
**59438**



**16534**

## BT Breather Bolts 92-on

PCP	Application	Type
<b>16534</b>	EVO 92-99	Hex
<b>73610</b>	TC 99-07	Hex
<b>16538</b>	TC 99-07	Nipple



**73610**



**16253**

## Evo Breather Kit

For use with custom air cleaner or carb on BT 93-99 and XL 91-on. Accepts 3/8" hose.  
**16253** 4 pc kit



**27224**

## Crankcase Breather and Bracket Kit

Fits CV carbs to allow use of aftermarket air cleaners on models with cylinder head/crankcase breather systems. Air cleaner must be ordered separately.

### PCP Description

<b>27223</b>	XL 91-on
<b>27224</b>	FLT 93-07, FXST-FLST 93-15, FXR 93-94, FXD 93-17
<b>27232</b>	TC Softail 00-15, FLT 99-07, FXD 99-17
<b>77027</b>	Filter for above



# Cable Clamps



## 2 Piece Chrome Cable Clamps.

Secures cables or wires to frame and forks. Sold each.

PCP	Size	# Holes	Type
27525	1"	1	Clutch
27526	1"	2	Throttle
27511	1-1/8"	1	
27512	1-1/4"	1	Throttle
73748	1-1/4"	2	Throttle
73749	1-1/4"	1	Clutch
27513	35mm	1	Clutch
27515	39mm	1	Speedo
73667	41mm	1	Speedo
73750	49mm	1	Clutch



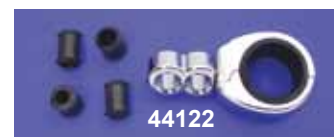
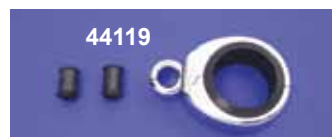
## Chrome Billet Cable Clamps-Sold Each.

PCP	Size	Application
73670	1"	Throttle cable, single
73672	1"	Clutch cable
73673	1-1/8"	Clutch cable
73674	41mm	Clutch cable



## 2 Piece Chrome Dual Throttle Cable Separator

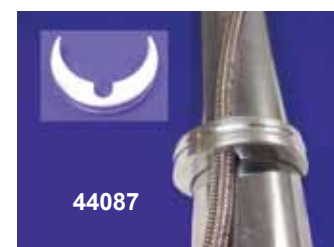
PCP	Holes	Handler Bar Size
73508	2	1"
73509	1	1"
73510	2	1-1/4"
73511	2	1"



## Chrome Cable Clamps

Unique two piece design allows easy installation. Swivel head design allows more natural cable routing without excessive bending. Rubber sleeves protect painted surfaces and cable housing. 1" clamps fit handlebars and aftermarket frames.

PCP	Size	Holes	Type
44119	1-1/4" - 1-1/2"	Single	Throttle/clutch
44120	1-1/4" - 1-1/2"	Dual	Throttle/clutch
44121	1" - 1-1/8"	Single	Throttle/clutch
44122	1" - 1-1/8"	Dual	Throttle/clutch
44123	7mm - 9mm	Single	Cable holder
44124	7mm - 9mm	Dual	Cable holder



## 41mm Push On Fork Tube Clamps

Use to secure speedo cables and brake lines. Sold Each.

PCP	Style
44086	Smooth
44087	Groove

# Throttle Cables



## Throttle by Wire +4" Extension Harness Kit

For the right side only and has 6 wires total. Does not have cruise and fits the Molex connector. Fits FLT 08-on.

**21856**



## Throttle by Wire Extension Harness Kit

Throttle by wire +12" extension harness kit is for the right side only and has 6 wires total, without cruise. This harness fits the Molex Connector. Order switch housing kit separately left and right side. Fits FLT 08-on.

**21903**



## Barnett

**47266** Throttle S&S Super E 96-on

**47267** Idle S&S Super E 81-95



## FLT 84-89 Carb Cables Imported

**47420** Throttle (56327-81B)

**47421** Idle (56328-81B)



## M&M Black Throttle and Idle Cable Set.

Black throttle and idle cable set with elbow fitting.

PCP	Casing Length	Elbow	Fitment
<b>47624</b>	36.81"	45	FLH 81-84, FX 81-84, FXST 84-89, FLST 86-89 (stock length)
<b>47625</b>	44.81"	45	+8" FLH 81-84, FX 81-84, FXST 84-89, FLST 86-89
<b>47626</b>	34.92"	90	FXST, FLST, FXD 90-95
<b>47627</b>	42.92"	90	+8" FXST, FLST, FXD 90-95
<b>47628</b>	34.84"	90	FXST, FLST, XL 96-on
<b>47629</b>	42.84"	90	+8"FXST, FLST, XL 96-on



## M&M Stainless Steel Throttle and Idle Cable Set.

Stainless steel throttle and idle cables are clear coated.

PCP	Casing Length	Fitment
<b>47605</b>	33.66"	XL 883/C, 1200S, 1200C 99-03 stock length (56564-02)



## XL Throttle or Idle Cable Assemblies

Black	Description
<b>5701</b>	86-87 Stock throttle
<b>5702</b>	As above stock idle

# Throttle Cables



## Barnett Throttle Cables

All Barnett throttle cables are made with black PVC coated stock diameter nylon lined casing with 3/64" extra flexible (7 x 7 strand) inner cable for extra long life. All cable fittings and elbows are bright nickle finish.

### Barnett Misc. Carb Cables

Part	Size	Description
2234		For early type Mikuni carb conversion 38-44mm , universal, not for HS40 and newer
47000	41"	Throttle cable Mikuni HS 40 kits thru 95 130 degree elbow
47002	41"	Idle cable, as above
47005	41"	Throttle cable Mikuni HS 40 kits 96-on 90 degree elbow
47006	41"	Idle cable, as above
47007	36"	Throttle cable Mikuni HS-42/45 81-95 130 degree elbow
47009	36"	Throttle cable Mikuni HS-42/45 96-on 90 degree elbow (late model)
47011	38"	Throttle cable S&S Super E,G 81-95 130 degree elbows
47832		S.S. as above
47012	38"	Idle cable, as above
47833		S.S. as above
47013	38"	Throttle cable S&S Super E,G 96-on w/90 degree elbow
47834		S.S. as above
47014	38"	Idle cable, as above
47835		S.S. as above
7424	35"	Throttle cable S&S (not super E,G), SU, Bendix 81-95, 130 degree elbow
7426	35"	Idle cable, as above
7425	41"	Throttle cable, as above
7427	41"	Idle cable, as above



## Barnett Throttle Cables For Mikuni HS40 Kits Mikuni Thru 44mm (Not HS 40/42/45)

47000	Throttle cable (pull) 41" 130 degree 82-95
47001	Throttle cable +6" (pull) 130 degree 82-95 (47" outer)
47002	Idle cable (push) 41" 130 degree to 82-95
47003	Idle cable +6" (push) (47" outer)
47004	Adapts 81-95 stock throttles to Mikuni carbs thru 44mm (not HS 40/42/45)

## Chrome Throttle Clamps

Clamps feature smooth design, upper and lower pieces with screws for single or dual cable applications.

PCP	Application
73506	Single
73507	Dual



## Chrome Throttle Housing

Custom design for single cable operation.

73663



## Chrome Cable Wrap 60" Long

Classic 50's style dresser trim item.

45196 Small diameter 3/16"



73620



73623



## Retro Throttle Housing

Old school style for single cable.

73620	Black
73623	Chrome

51031



51030



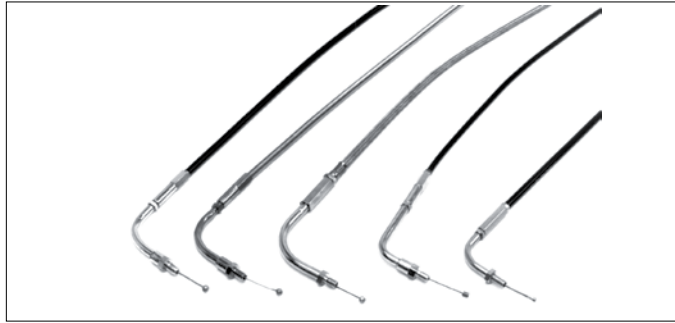
## Throttle Assemblies

Replacement 1" throttle assemblies with screw.

Black	Chrome	Type	Application
51031	51030	Dual	81-on



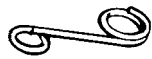
# Throttle Cables



## Big Twin Throttle or Idle Cable Assemblies.

Available in black vinyl or braided stainless steel (not clear coated) with correct end fitting for each application. Also available in overstock length, as noted.

S/S	Black	Type	Sz	Application (Imported)
5705	2237	Throttle	Stock	FX, FLH, FXST, FLST 81-89
-	47426	Throttle	+12"	FX, FLH, FXST, FLST 81-89
5704	2238	Idle	Stock	FX, FLH, FXST, FLST 81-89
-	47427	Idle	+12"	FX, FLH, FXST, FLST 81-89
	3651	Throttle	Stock	FXRT, FXLR, FXRSE 83-87
	3655	Idle	Stock	FXRT, FXLR, FXRSE 83-87



## Control Cable Guide Hook

Replaces OEM 45092-66. Stock on 66-89 FL's but has many universal applications.

3980 Control hooks (5 pk)



## Cable Routing "L" Bracket

Chrome bracket used for 1/2" O.D., on brake, clutch cables and hoses. 1/4" mounting hole.

16200 Sold each



## Heat Shrink Tubing for Braided Cables

Use clear heat shrink tubing on all braided stainless steel cables to prevent scratching of chromed or painted surfaces. Kit contains 4-16" long heat shrink tubes to cover 2 throttle cables, 1 clutch and 1 speed cable.

PCP	Application
28713	Cable sleeve kit
28714	3/8" x 10' roll
28715	1/2" x 10' roll
28716	3/4" x 10' roll



59869

## M&M Clear Coated Stainless Braided Cables

Cables for throttle and idle applications.

PCP	Size	Application	Elbow Degree
59869	42"	S&S 96-on	90
21847	41-3/4"	S&S 96-on	90
59605	46"	S&S 96-on, FLT 96-07	90
59603	42"	S&S 82-95	45
59604	50"	S&S 82-95	45
59600	Stock	FXST, FLST 96-on, FXD 99-17, FLT 96-07	90
59870	+8"	FXST, FLST 96-on, FXD 99-17, FLT 96-07	90
59601	Stock	FXST, FLSTS 90-95, FXR 90-94	90
21848	+8"	FXST, FLST, FXR 90-95	90
59602	Stock	FX, FLST, FLH, XL 81-89	45
21834	Stock	FLTRI 98-01	90
		FLHTCUI 96-01	
21835	Stock	FLHRCI, FLHR/I 02-07	90
47605	Stock	XL 1200C, 883/C, 1200S 99-03	45



## Stainless Steel Idle and Throttle Cable Set

Stainless steel cables have a clear coat finish

PCP	Throttle	Idle	Fitment
21924	43"	37.44"	FLT 90-93, FLHT 90-95, (90° Elbow) FLHR 94-95 (56327-90)



## Inner Throttle Sleeve

Custom design allows pull action or throttle cable for use with billet grips.

59730

1. Cut 2-3/8" off end of handlebar. Remove end of throttle handle that would attach to throttle cables.
2. Mark handlebar for inner throttle sleeve. Drill a hole for the set screw that will hold throttle on the handlebar.
3. Remove set screw from the outer sleeve of spiral. Slide grip on and mark the end of grip on the handlebar. Measure from this mark back to set screw in outer sleeve. This measurement will be used to mark and drill the throttle grip. Once drilled, install grip. Use a small amount of Loctite on set screw for final installation.

# Barnett Cables

Barnett's smooth working, long lasting cables are virtually indestructible and are made from the finest components available. Casings are constructed from hard drawn spring wire and all fittings, ferrules and adjusters are machined in house from brass, aluminum and stainless steel to stringent specifications. All Barnett throttle cables are made with black PVC coated stock diameter nylon lined casings with 3/64" extra (7x7 strand) inner cable for extra long life. All cable fittings and elbows have a bright nickel finish. **All stainless cables have an anti-abrasive clear coat to protect paint and polished metal.**

THROTTLE CABLES					IDLE CABLES				
OEM	Black Vinyl		Stainless Steel		OEM	Black Vinyl		Stainless Steel	
	STD	+6"	STD	+8"		STD	+6"	STD	+8"
56306-88	47226	47227			56305-88	47228	47229		
56306-90	47230	47231			56305-90	47232	47233		
56306-96	47254				56305-96	47256			
56308-86	47208				56309-86	47210	47211		
56308-88	47212	47213	47800	47801	56309-88	47214	47215	47802	47803
56308-96	47240		47804	47805	56309-96	47242		47806	47807
56313-76	47202	47203 +8"			56323-81C	47206	47207 +8"	47810	47811
56314-78	47200				56328-81B	47218		47814	47815
56320-77	47202				56328-90	47222		47826	47827
56324-81C	47204	47205 +8"	47808	47809	56328-96	47264		47830	47831
56327-81B	47216		47812	47813	56337-83	47225			
56327-90	47220		47824	47825	56342-88	47239			
56327-96	47262		47828	47829	56342-90	47236	47237 +8"	47818	47819
56336-83	47224				56342-96	47251	47252 +8"	47822	47823
56343-88	47238				56358-96	47247			
56343-90	47234	47235 +8"	47816	47817	56362-02	47306			
56343-96	47249	47250 +8"	47820	47821	56375-96	47264		47830	47831
56357-02	47304				56401-96	47260			
56375-96	47262		47828	47829					
56376-94	47220								
56379-96	47246								
56400-96	47258								
56357-96	47248								

	THROTTLE		CABLES		IDLE CABLES			
	Black Vinyl		Stainless Steel		Black Vinyl		Stainless Steel	
	STD	+6"	STD	+8"	STD	+6"	STD	+8"
<b>Sportster Models</b>								
XLH 883 86-87	47208				47210	47211		
XLH 883 88-95	47212	47213	47800	47801	47214	47215	47802	47803
XLH 883 96-99	47240	47241	47804	47805	47242	47243	47806	47807
XLH 883 Deluxe 87	47208				47210	47211		
XLH 883 Deluxe 88-95	47212	47213	47800	47801	47214	47215	47802	47803
XLH 883 Hugger L87	47208				47210	47211		
XLH 883 Hugger 88-95	47212	47213	47800	47801	47214	47215	47802	47803
XLH 883 Hugger 96-99	47240	47241	47804	47805	47242	47243	47806	47807
XLH 883C Hugger 00-01	47270				47272			
XLH 883R 02-03	47240		47804	47805	47242	47243	47806	47807
XLH 1100 86-87	47208				47210	47211		
XLH 1200 88-95	47212	47213	47800	47801	47214	47215	47802	47803
XLH 1200 96-99	47240	47241	47804	47805	47242	47243	47806	47807
XLH 1200 C 96-99	47240	47241	47804	47805	47242	47243	47806	47807
XLH 1200 S 96-03	47258				47260			
XLH 1200C 00-01	47270				47272			
XLH 1200C 02-06	47258				47260			

<b>For Big Twin Models</b>								
FLHR 94-95	47220				47222			
FLHR 96-01	47262		47828	47829	47264		47830	47831
FLHR 02-04	47304				47306	47321*		
FLHR-I 96-01	47246				47247	47323*		
FLHR-I 02-04	47304				47306	47324*		
FLHRC-1 98-99	47248				47247	47323*		
FLHRC-1 00-01	47246				47247	47323*		
FLHRC-1 02-04	47304				47306	47324*		
FLHS L87-89	47216		47812	47813	47218		47814	47815
FLHS 90-95	47220		47824	47825	47222		47826	47827

\*Cruise cable (extra length)

# Barnett Cables

	THROTTLE		CABLES		IDLE CABLES			
	Black Vinyl	+8"	Stainless Steel	+8"	Black Vinyl	Stainless Steel	STD	+8"
FLHT 84-89	47216		47812	47813	47218		47814	47815
FLHT 90-95	47220				47222			
FLHT 96-01	47262	47263	47828	47829	47264	47265	47830	47831
FLHT 02	47304				47306			
FLHT 03	47314							
FLHTC 83	47204	47205	47808	47809	47206	47207	47810	47811
FLHTC 84-89	47216		47812	47813	47218		47814	47815
FLHTC/U 90-95	47220		47824	47825	47222		47826	47827
FLHTC 96-01	47262	47263	47828	47829	47264	47265	47830	47831
FLHTC 02	47304				47306			
FLHTC 03	47314							
FLHTC-1 96-01	47248		N/A					
FLHTC-1 02-06	47304				47306			
FLST 86-89	47204	47205	47808	47809	47206	47207	47810	47811
FLST 90	47234	47235	47816	47817	47236	47237	47818	47819
FLSTC L87-89	47204	47205	47808	47809	47206	47207	47810	47811
FLSTC 90-95	47234	47235	47816	47817	47236	47237	47818	47819
FLSTC Heritage, FLSTC-I								
Heritage F/I 01-03	47310				47312			
FLSTF 90-95	47234	47235	47816	47817	47236	47237	47818	47819
FLSTF 96-99	47249	47250	47820	47821	47251	47252	47822	47823
FLSTN 93-95	47234	47235	47816	47817	47236	47237	47818	47819
FLSTN,C,F 96-99	47249	47250	47820	47821	47251	47252	47822	47823
FLSTS 98-99	47254				47256			
FLSTS 00	47249				47251			
FLSTS, FLSTS-I 01-03	47310				47312			
FLT 84-86	47216		47812	47813	47218		47814	47815
FLTC 84-89, Ultra 1989	47216		47812	47813	47218		47814	47815
FLTC 90-95, Ultra	47220		47824	47825	47222	47322*	47826	47827
FLTCU-I 96-2000	47248				47247			
FLTR 98-2001	47262				47264			
FLTR 02	47314				47316	47325*		
FLTR-I 98-99	47246				47247			
FLTR-I 00-01	47248				47247			
FLTR-I 02-03	47304				47306			

\*Cruise cable (extra length)



**4785**

## Dual Throttle Clamp Sets 82-95

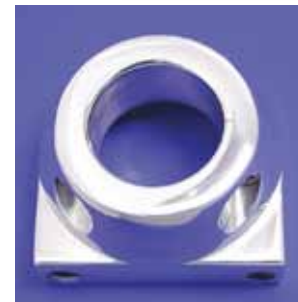
Chrome die-cast clamp sets include the upper and lower clamp with screw.

PCP	Application	Finish
4785	81-on	Chrome
73547	81-on	Black

## Radii Billet Throttle

Accepts single 82-95 throttle cable.

73662



## Dual Billet Throttle Housing

For use with screw-in idle and throttle cable. Fits FLT 79-95, XL 81-95, Softail 84-95, FXD 91-95.

73713



# Barnett Cables

	THROTTLE		CABLES		IDLE CABLES			
	Black Vinyl STD	+8"	Stainless Steel STD	+8"	Black Vinyl STD	+8	Stainless Steel STD	+8"
FXD 96-03	47249				47251			
FXDB, FXD, D/Glide 91-95	47234	47235	47816	47817	47236	47237	47818	47819
FXDL, FXDWG 93-95	47234	47235	47816	47817	47236	47237	47818	47819
FXDL 96-03	47249				47251			
FXDS-CONV, FXDWG 96-03	47249				47251			
FXDWG w/OEM stainless			47820				47822	
FXDX 00-03	47249				47251			
FXDXT 02-03	47249				47251			
FXEF 81-85	47204	47205	47808	47809	47206	47207	47810	47811
FXLR 87	47224				47225			
FXLR L/Rider Custom 88-89	47238				47239			
FXLR L/Rider Custom 90-95	47234	47235	47816	47817	47236	47237	47818	47819
FXR 82-89	47204	47205	47808	47809	47206	47207	47810	47811
FXR Superglide 90-94	47234	47235	47816	47817	47236	47237	47818	47819
FXRC L85-L87	47204	47205	47808	47809	47206	47207	47810	47811
FXRD 86	47224				47225			
FXRDG L84, FXRS 82-89	47204	47205	47808	47809	47206	47207	47810	47811
FXRS 90-95	47234	47235	47816	47817	47236	47237	47818	47819
FXRS Convertible L89	47204	47205	47808	47809	47206	47207	47810	47811
FXRS Convertible 90-95	47234	47235	47816	47817	47236	47237	47818	47819
FXRS Sport Edition L85-86	47204	47205	47808	47809	47206	47207	47810	47811
FXRS Sport Edition 87-89	47224				47225			
FXRS Sport Edition 90-93	47234	47235	47816	47817	47236	47237	47818	47819
FXRT 83-89	47224				47225			
FXRT 90-92	47234	47235	47816	47817	47236	47237	47818	47819
FXSB 83-85	47204	47205	47808	47809	47206	47207	47810	47811
FXST 84-89	47204	47205	47808	47809	47206	47207	47810	47811
FXST 90	47234	47235	47816	47817	47236	47237	47818	47819
FXST 96-00	47249				47251			
FXST std, FXST-I std F/I 01-03	47310				47312			
FXSTB 99	47326				47328			
FXSTB, FXSTB-I Nite Train 00-03	47326				47328			
FXSTC 86-89	47204	47205	47808	47809	47206	47207	47810	47811
FXSTC 90-95	47234	47235	47816	47817	47236	47237	47818	47819
FXSTC 96-99	47249	47250	47820	47821	47251	47252	47822	47823
FXSTD 00	47249				47251			
FXSTD, FXSTD-I Duece 01	47310				47312			
FXSTD Duece 02-03	47310				47312			
FXSTD-I Duece F/I 02-03	47310				47312			
FXSTS L88-89	47226	47227 +6"			47228	47229 +6"		
FXSTS 90-95	47230	47231 +6"			47232	47233 +6"		
FXSTS 96-99	47254				47256			
FXSTS 00-03	47254				47256			
FXSTS-I, Springer F/I	47254				47256			
FXSTSB 95	47234	47235	47816	47817	47236	47237	47818	47819
FXSTSB 96-97	47249	47250	47820	47820	47251	47252	47822	47823
FXWG 81-86	47204	47205	47808	47809	47206	47207	47810	47811
VRSCA, V-Rod 02-07	47318				47320			



## Dual Push-Pull Kit 81-95

### PCP Application

59740	81-90 Kit w/Barnett cables
59741	91-95 Kit w/Barnett cables



## 38" Throttle and Cable Kit

Kit includes grips, throttle idle and Barnett throttle cable with ends attached for S&S Super E and G carbs.

59739